

15 Walara Drive, Mount Martha, Vic 3934

Sold Residential Land

Saturday, 11 May 2024

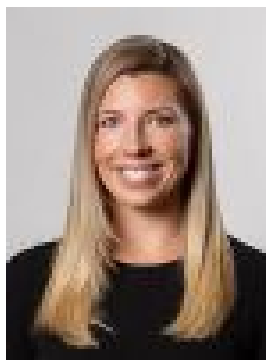
15 Walara Drive, Mount Martha, Vic 3934

Area: 815 m2

Type: Residential Land



Samuel Dalziel
0359741401



Carly Lindley
0359741401

\$945,000

A dream opportunity in this highly sought-after locale surrounded by newly constructed high-end & renovated residential homes. Appreciate the quiet location and explore the peaceful walking tracks. Perfectly positioned, this near-flat coastal block of land is undeniably a rare chance to build your dream home. Boasting a North facing backyard with views of Port Phillip Bay's glistening blue waters from a second story height, endorsed plans and a planning permit already in place, kick-start your build and enjoy everything the Peninsula has to offer. Walking distance to Mt Martha Village, Primary School and pristine South Beach, this prime block of approx. 815m² is sure to inspire. Seize this window today and bring your vision to life