

**15 Waterfall Road, Oatley, NSW 2223**

**McGrath**

**Sold House**

Saturday, 2 September 2023

15 Waterfall Road, Oatley, NSW 2223

**Bedrooms: 2**

**Bathrooms: 1**

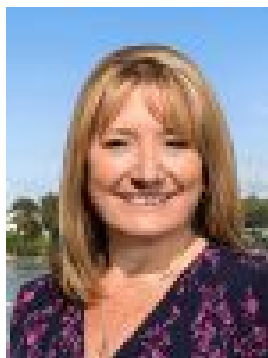
**Parkings: 3**

**Area: 445 m2**

**Type: House**



Kieran Bresnahan  
0285587288



Sharyn Hopkins  
0407666159

**\$1,800,000**

Tightly-held by its original owner, this lovingly maintained residence is comfortable as is yet offers plenty of scope to add value if desired. It's a stroll from Oatley West Public School and Oatley Park, while handy to shops, buses and the station.- L-shaped living and dining zone flows to family room/study- Generous entertaining space extends to landscaped backyard - Neatly presented interiors blanketed in quality carpet - Original kitchen features an electric stove and breakfast bar- Two comfortable bedrooms with mirrored built-in wardrobes- Updated bathroom appointed with frameless walk-in shower- Air conditioning, garden shed, external laundry room with w/c- Lockable tandem carport with drive through access to backyard- Option to renovate, reconfigure or rebuild a new home (STCA)- Just moments from cafés, restaurants, IGA and Oatley Hotel