

# 15 Wilsons Lane, Lilydale, Vic 3140



## House For Sale

Saturday, 9 March 2024

15 Wilsons Lane, Lilydale, Vic 3140

Bedrooms: 3

Bathrooms: 1

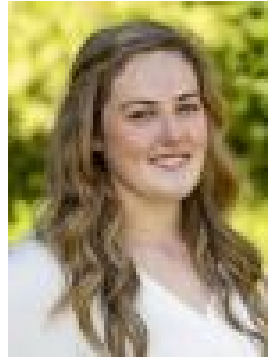
Parkings: 4

Area: 1000 m2

Type: House



Phil Licciardi  
0408808108



Keisha Chester  
0412725883

**\$890,000 - \$950,000**

Built with integrity and cherished by the one family, this traditional home on approximately 1,000sqm is one of incredible practicality and possibilities. Available to the market for the first time, it is now ready for a new generation to embrace it or explore its potential for multi-unit redevelopment (STCA). Offering superb convenience, the property is positioned within an easy walk to bus services, parks, the Warburton Rail Trail, Lilydale Train Station, malls and Main Street's vibrant shopping and dining strip. Only a short commute to a great selection of pre, primary and secondary schools, recreational facilities, Lillydale Lake plus the renowned wineries and golf courses of the Yarra Valley.- Featuring a functional footprint that can be enjoyed as is or enhanced to one's liking, the existing brick home offers all the essentials for comfortable living- A spacious lounge room greets you inside, offering a relaxing space to unwind- The large combined kitchen and meals area is a social hub to gather and has been updated over the years with 900mm cooking appliances, a walk-in pantry and a dishwasher- Three bedrooms supply restful accommodation- A family bathroom with a shower, bathtub and vanity services the rooms- A wash closet with a basin is placed separately for convenience- The supersize laundry with double trough will make washing an effortless experience- Outside, the covered patio with a wet area and preparation station is a fabulous area to entertain and celebrate special occasions. The big backyard beyond boasts generous lawn space for children and pets to play, a variety of established fruit trees to devour and a shed for storage- The four-car garage with an automatic door affords liberal car parking and there is a workshop under the house for stowing tools and equipment- Kept comfortable with the inclusion of ducted heating and evaporative cooling, this home can be relished for many years as is or leased out whilst plans for its future are decided