

1500 Greendale Road, Wallacia, NSW 2745



Acreage For Sale

Friday, 3 May 2024

1500 Greendale Road, Wallacia, NSW 2745

Bedrooms: 3

Bathrooms: 1

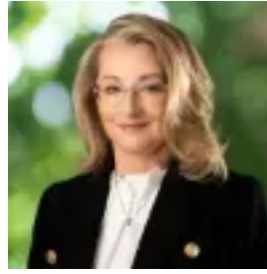
Parkings: 7

Area: 40 m2

Type: Acreage



Paul Cutcliffe
0245878855



Lisa Harris
0245878855

Expressions of Interest

Discover a prime 100-acre rural haven nestled on Greendale Road, offering a generous 600-metre road frontage. This expansive estate boasts outstanding elevated views stretching across to the Blue Mountains' picturesque foothills, with the mostly cleared land enjoying natural highlights like two large dams and the serene ambience of two winding creeks. The parcel is designated with RU1 zoning and town water connection, presenting several potential home sites, with security and privacy afforded by substantial quality fencing. Enhancing its appeal is a tidy manager's cottage complemented by a spacious three-bay lock-up shed. Future infrastructure developments are also abundant, with the upcoming Western Sydney International Airport and its surrounding aerotropolis only a 15-minute drive away and the booming South West Growth Area on its doorstep. Conveniently located less than 2km from the charming village of Wallacia, the property stands in close proximity to schools, making it ideal for families seeking acreage living. Furthermore, its strategic central position offers easy access to the commercial and business hubs of Penrith, Camden, and Oran Park. Features: - Prime 100-acre property with 600-metre road frontage - Elevated views over the Nepean River towards the Blue Mountains - Mostly cleared land with two large dams and two creeks - Designated with RU1 zoning and town water connection - Surrounded by substantial quality fencing for security and privacy - Includes a manager's cottage and a three-bay lock-up shed - Only 15 minutes to the upcoming Western Sydney International Airport - Less than 2km from Wallacia village and nearby schools - Centrally positioned with easy access to Penrith, Camden, and Oran Park Contact your friendly Cutcliffe agent today for more information.