

# 151-157 West Wilchard Road, Castlereagh, NSW 2749



## Acreage For Sale

Thursday, 7 December 2023

151-157 West Wilchard Road, Castlereagh, NSW 2749

Bedrooms: 5

Bathrooms: 3

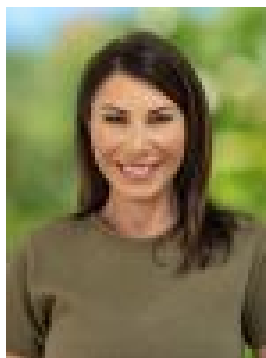
Parkings: 4

Area: 2 m2

Type: Acreage



Tim Cutcliffe  
0414547023



Lisa Ryce  
0410749660

## New Listing

Situated on a serene 5-acre plot, this diverse property blends countryside allure with contemporary ease, ideal for families or those desiring ample space. Surrounded by nature, it features breathtaking views to the Blue Mountains and overlooks the pristine Penrith Lakes, providing a haven of peace. The main house features a spacious lounge and dining area leading from an inviting foyer, while a sizable kitchen adjacent to a meals space enhances the home's heart. Three generously sized bedrooms include a master suite with a walk-in wardrobe and ensuite and a second and third bedroom, each with built-in wardrobes, serviced by a bathroom with shower and bath and a separate water closet. Additionally, under the main roof a separate entrance offers a further 2-bedrooms with self contained living . This private space includes a kitchen and bathroom, ideal as a parent's retreat, teenager's sanctuary, or rental opportunity. The two spaces would also perfectly combine to complete a large family home. Outdoor highlights include a large heated infinity pool, two entertaining areas with stunning vistas, and a secure, pet-friendly backyard overlooking the remaining 3.5 acres of arable land with a dam and shed. Additionally, a double garage with laundry facilities and a garden shed cater to practical needs. All serviced with Town water. This property presents a prized package for buyers, with its location offering the best of both worlds - a peaceful hideaway with easy access to local essentials and attractions. Features: - 5-acre property with 3.5 acres of arable paddocks and views of the Blue Mountains - Positioned in one of Castlereagh's most sought-after addresses - Family home with multiple living spaces, sizable kitchen, and home office - 3 air conditioning units, 2 dishwashers, and a cosy fireplace - 5 bedrooms, two with built-in robes, master with ensuite and walk-in robe - Separate, self-contained 2-bedroom space with private entrance - Pet and child-friendly backyard, two alfresco areas with mountain views - Heated infinity pool, fully fenced for safety and entertainment - Equipped with a double garage, various sheds, and a dam - 15-minute drive to Penrith CBD, close to noted private and public schools Contact your friendly Cutcliffe agent today for more information.