

1510/265 Exhibition St, Melbourne, VIC, 3000

MELBOURNE LIVING
ST KILDA ROAD

Sold Apartment

Friday, 12 May 2023

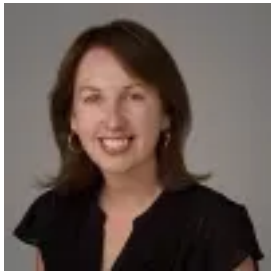
1510/265 Exhibition St, Melbourne, VIC, 3000

Bedrooms: 3

Bathrooms: 2

Parkings: 2

Type: Apartment



Angela Davidson
0396823713

Regency Towers- A Seductive Showstopper in The Theatre District

Located on the 15th floor of the tightly-held Regency Towers, this superb apartment is surrounded by a magnificent scenic setting.

Leading out to a balcony, the beautifully generous living & dining room incorporates a Blanco-appointed granite open plan kitchen with its own window with views.

There are three bedrooms all with built in robes, the master bedroom boasts its own personal wrap-around balcony & a dressing room through to a marble ensuite bathroom. A second spacious marble bathroom incorporates the laundry for convenience.

Dressed in neutral tones this city slicker also features ducted heating & cooling, video-monitored security & 2 car parks.

Residents enjoy access to four passenger lifts as well as a rooftop terrace with an indoor pool, gym, sauna, spa & outdoor area.

And when you are not lapping up these amenities, you can head downstairs to catch the latest show or musical, catch up with friends at one of the many restaurants or catch a tram to the Botanical Gardens for a leisurely walk or energizing jog around the Tan.