

**15305/177-219 Mitchell Road, Erskineville, NSW
2043**



Sold Apartment

Wednesday, 4 October 2023

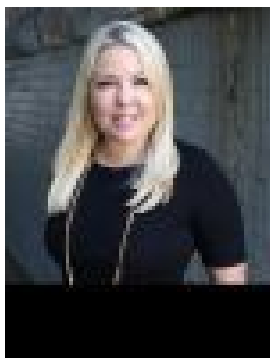
15305/177-219 Mitchell Road, Erskineville, NSW 2043

Bedrooms: 2

Bathrooms: 2

Parkings: 1

Type: Apartment



Melissah McCaffery J P
0408601495

Contact agent

SOLD OFF MARKET This original 2 bedroom apartment featuring a lucrative entertainers balcony is nestled within the acclaimed Sydney Park Village complex promises an idyllic urban lifestyle. Generous open plan living & dining area Original gas kitchen w/ stainless steel appliances Master bedroom w/ walk-in robe & ensuite Entertainers balcony w/ private leafy outlook Second bedroom w/ built-in robes Original bathroom w/ tub & separate laundry Secure car space & ample visitor parking Strata levies approx. \$2000/q Sitting on the fringe of Sydney's inner west and inner city, its popular location is 5km from the CBD, 5 minute walk to St Peters station or 10 minute walk to Erskineville station and located directly across from the 2020 Architizer A+ Awards most extensive architecture awards program winner Sydney Park. Highly prized for its relaxed yet vibrant community feel & only moments to the enduring pub culture & buzzing café scene, Sydney Park Village is one of the most sought-after resort style buildings in Sydney. Offering incomparable facilities including 24/7 onsite security guards, 60 visitor car spaces, outdoor pools, tennis courts, basketball court, upgraded gymnasium, indoor heated lap pool, onsite café, onsite building management, beautician, dentist & more – plunge into this urban sanctuary.