

1547/1 Finch Drive, Eastgardens, NSW 2036

Apartment For Sale

Monday, 27 November 2023



1547/1 Finch Drive, Eastgardens, NSW 2036

Bedrooms: 2

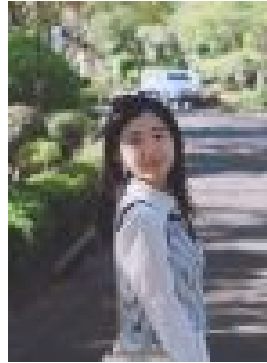
Bathrooms: 2

Parkings: 2

Type: Apartment



Eric Wang
0498332031



Angela Lou

\$1,030,000 | 2 Car Space | Abundant Sunlight

What we love about this property: • High Level View • North Facing Abundant Sunlight • 2 spacious bedrooms with built-ins • Sunlit glass-fronted living opens to a deep north facing balcony • Miele-appointed gas kitchen, stone benchtops and breakfast bar • Stylish designer bathrooms, ensuite with a freestanding bath • Internal laundry with dryer, ducted air, secure parking, lift access • Landscaped podium gardens with outdoor cinema and bbq facilities • Indoor pool with spa, sauna, gym, walk to Heffron and Mutch Parks

INTERNAL AREA 84m²BALCONY AREA 10m²TOTAL AREA 94m² + 2 carspace • A prized location, this island development is close to championship golf courses, famous beaches, world class universities, an abundance of parks, and next to Westfield Eastgardens. • Onsite 6,000sqm Pagewood Centro retail precinct offering 23 specialty stores, a major national supermarket and an open-air laneway lined with restaurants and outdoor dining • Westfield Eastgardens Bus Interchange next door & onsite bus stop with direct services to Bondi Junction and Kingsford Light Rail station. • Built to maximise on comfort and convenience with a stylish flair, this apartment is perfect for executive singles or couples looking for an easy commute to work in the CBD, young families looking for apartment living with a vibrant community vibe, discerning downsizers or astute investors. This is certainly an opportunity not to be missed.

Location & Transport:- Westfield Eastgardens 50 meters- Pagewood Green Bus stop 50 meters- Pagewood Green Central Park right at the foot of your door step- Moments to Coogee and Maroubra Beaches- Walking distance to many of Eastern suburb's exclusive schools.- Westfield Eastgardens Bus Interchange next door & onsite bus stop with direct services to Bondi Junction and Kingsford Light Rail station.