

159 Old Eltham Road, Lower Plenty, Vic 3093

House For Sale

Monday, 15 April 2024

159 Old Eltham Road, Lower Plenty, Vic 3093

Bedrooms: 4

Bathrooms: 2

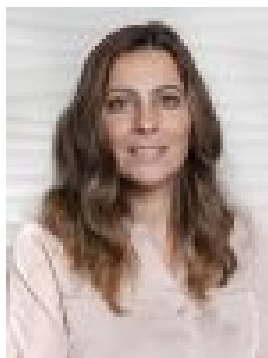
Parkings: 1

Area: 1261 m2

Type: House



Rocco Montanaro
0412379171



Carla Baglieri
0394312444

ESR: \$1,850,000 - \$2,035,000

EXPRESSIONS OF INTEREST: Offers close by Tuesday 14th May at 5pm (unless sold prior) Set behind a manicured lawn and established plantings that ensure peace and privacy, this 1930s home impressively showcases the grace and grandeur of a bygone era while seamlessly introducing carefully considered contemporary touches to cater to every aspect of family life. Entered via a deep veranda, the interior, enhanced by deco details including Baltic pine floorboards, decorative cornice, and ornate ceilings, starts out with a warm and welcoming sitting room where an open fireplace in a hand-crafted stone wall sets the stage for the elegant, yet carefree living within. The heart of the home lies in the spacious living-meals. Finished with timber floors, complementing unmarked paint in neutral tones, it integrates a kitchen that will delight the gourmet. Stone tops over soft close cabinetry, a farmhouse sink, a step-in pantry, an induction top, a convection microwave and a pyrolytic oven (all from Miele) enhance the culinary experience and allow effortless entertaining! The landscaped rear yard is a private sanctuary that seamlessly connects the living areas. Paved for easy care and screened by established plantings, it features a sparkling heated pool and sauna, covered spaces with heating for year-round alfresco enjoyment, open spaces for lounging, and a relaxed link between the house and a studio, ideal for those working from home. The retreat-size dimensions of the main bedroom are heightened by a deluxe ensuite introducing matte black fittings and fixtures, a stone vanity and access to a private terrace with a treetop outlook. Along with a spa bathroom enjoying a garden outlook through a picture window, the remaining bedrooms share their wing with a versatile retreat/toy room/study, depending on your needs. A multi-purpose room on the lower level introduces further accommodation options. With impressive dimensions that deliver room for a bed, lounge, and desk, it's the perfect option for a teen or even multi-generational living. Integrated under the house are a garage, a large workshop and a cellar with a tasting area and racking for 50 dozen bottles. Settled on a 1260m² allotment with plenty of off-street parking, it is within easy reach of schools, the bus, private golf courses, Lower Plenty and Bolton Street Villages, and parklands along the Yarra. Eltham's shopping, dining, and entertainment options, along with the station, are just minutes away! ***PHOTO ID REQUIRED AT OPEN FOR INSPECTIONS***