

15A Chitral Terrace, South Plympton, SA 5038

House For Sale

Thursday, 13 June 2024

NOAKES
NICKOLAS

15A Chitral Terrace, South Plympton, SA 5038

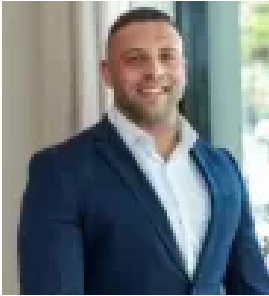
Bedrooms: 3

Bathrooms: 2

Parkings: 2

Area: 251 m2

Type: House



Jorden Tresidder
0881663989



Casey Grigg
0422592852

Best Offers By 1/7 (USP)

Best Offers By Monday 1st of July at 1pm (Unless Sold Prior). From the immaculate streetscape to its coveted corner positioning, every aspect of this contemporary c2017 residence will redefine the way you live life from an in-demand city-to-surf pocket. Presenting like brand new, the internal footprint spans across sleek grey tiles, where the first two carpeted bedrooms with built-in robes flank a floor-to-ceiling tiled main bathroom with separate bathtub. The third bedroom accesses another floor-to-ceiling tiled ensuite of its own, granting great accommodations for those flat-sharing or with kids craving their own independence. North-facing open plan living and dining offers a sunny spot to relax and entertain, assisted by a neutral kitchen boasting quality gas cooktop, dishwasher, gloss cabinetry and stone benchtops. Sliding doors incorporate an under roof alfresco as a secondary entertainment space, surrounded by an easy-care garden bed and securely wrapped in good neighbour fencing. From your front door, enjoy a breezy city commute via Edwardstown train station, or a quick tram ride in the other direction to enjoy dinner and a movie along Jetty Road. It's all about lifestyle from South Plympton. Even more to love:- Torrens-titled & low maintenance - 6kW solar system- Secure garage with internal entry- Additional off-street parking - Roller shutters for added security- Two floor-to-ceiling tiled bathrooms- Ducted R/C air conditioning- Walking distance from bus, tram & train- Zoned for Plympton International College- Proximity to Forbes Primary, Emmaus Christian & Immanuel College- Easy access to Westfield Marion, Flinders University & Hospital Land Size: 251sqm Year Built: 2017 Title: Torrens Council: City of Marion Council Rates: \$1552.43 PASA Water: \$158.63 PQES Levy: \$133.15 PA Disclaimer: all information provided has been obtained from sources we believe to be accurate, however, we cannot guarantee the information is accurate and we accept no liability for any errors or omissions. If this property is to be sold via auction the Vendors Statement may be inspected at Level 1, 67 Anzac Highway, Ashford for 3 consecutive business days and at the property for 30 minutes prior to the auction commencing. RLA 315571.