

15A Lasseter Avenue, Chifley, NSW 2036

Duplex/Semi-detached For Sale

Monday, 30 October 2023

15A Lasseter Avenue, Chifley, NSW 2036

Bedrooms: 5

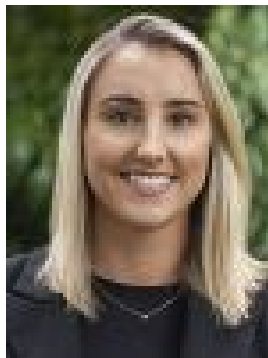
Bathrooms: 3

Parkings: 4

Type: Duplex/Semi-detached



Marnie Seinor
0425255200



Danielle Leemhuis
0402642718

Guide \$2,750,000

Complete with Botany Bay views, this duplex is a superbly designed and flawlessly executed new build with no expense spared to deliver a contemporary lifestyle of luxury. Its desirable address is moments from a choice of beaches, parks, cafés and schools.- Tri-level layout offers a choice of versatile living spaces- Open plan living/dining area has floor-to-ceiling glass doors- Private backyard featuring landscaped gardens and lap pool- Gas kitchen has German made sinks and Phoenix black tapware- Five light filled bedrooms include two with luxurious suites- Stunning fully tiled bathrooms boasting waterfall showers- Daikin ducted air conditioning, built-in entertainment unit- Samsung coded front door lock, security gates, alarm system- Study nook, blackout and sheer blinds, double lock-up garage- Chifley Public and Matraville Sports High School catchments