

16/1 Sandpiper Crescent, Newington, NSW 2127



Unit For Sale

Wednesday, 7 February 2024

16/1 Sandpiper Crescent, Newington, NSW 2127

Bedrooms: 2

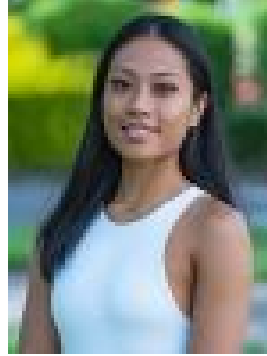
Bathrooms: 2

Parkings: 1

Type: Unit



Dylan Choe
0416932977



Hintha Mya
0439649618

Price guide \$748,000

Convenience, community and easy urban style combine for an amazing lifestyle with this quality two-bedroom apartment. Situated within the Mirvac-designed Fraser building directly opposite the Millennium Parklands, it brings light, quality and space to its list of many special features and provides a well-designed living space with tree-filled views over the surrounding area. - Smart and stylish interiors have a flowing single-level layout- A sun-filled open planned design features easy-clean flooring- Two balconies that both enjoy expansive views over parklands- Two bedrooms are positioned at opposite ends of the floorplan- Both bedrooms have built-ins and private access to a balcony- Modern user-friendly kitchen with adjoining dining/study space- A security car space, air-conditioning and intercom entry- Pet-friendly building with acres of open green space close by- Residents' access to a swimming pool and BBQ facilitiesThe location is quiet and private while relishing close proximity to world-class amenities at Sydney Olympic Park, and within 300m to Newington Marketplace, local cafés and public transport.