

**16/114 Riversdale Road, Hawthorn, Vic 3122**

THE AGENCY

**Apartment For Sale**

Wednesday, 8 May 2024

16/114 Riversdale Road, Hawthorn, Vic 3122

**Bedrooms: 2**

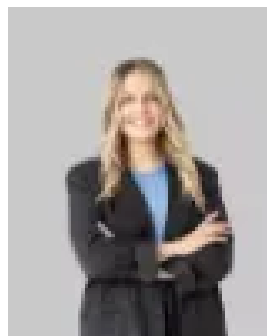
**Bathrooms: 1**

**Parkings: 1**

**Type: Apartment**



Luke Saville  
0385780388



Jordan Cain  
0385780388

**\$550,000 - \$590,000**

Step into a realm of refined living where rich oak timber flooring meets an abundance of natural light streaming through every window. This luminous two-bedroom apartment, nestled in the vibrant locale of Scotch Hill, offers an unparalleled fusion of comfort and accessibility. Immerse yourself in the elegance of modern design, where the radiant kitchen, adorned with sleek appliances and ample cupboard space, seamlessly flows into a generously proportioned open-plan living area. Step outside onto the delightful balcony, the perfect sanctuary for savoring your morning coffee as the world wakes up around you. Retreat into the tranquility of two spacious bedrooms, each boasting built-in wardrobes and large windows that invite the warmth of the sun into every corner. The contemporary bathroom, complete with laundry amenities, a convenient built-in shower/bath, and ample vanity storage, offers a haven of relaxation and rejuvenation. A designated parking spot awaits, catering to the needs of both discerning owner-occupiers and savvy investors alike. High on Scotch Hill, this apartment offers not only a superior lifestyle but also exceptional investment potential. With its proximity to Swinburne University and convenient access to transportation networks, including the 75 Tram into the CBD, the location is unmatched in its convenience. Explore the bustling Glenferrie shops, indulge in culinary delights at the nearby cafes and restaurants, or simply enjoy the scenic beauty of the Yarra River and its trails. With Renaissance IGA on Glenferrie Road just around the corner, every convenience is within reach.