

16/17-19 Ray Road, Epping, NSW 2121



Sold Unit

Friday, 8 September 2023

16/17-19 Ray Road, Epping, NSW 2121

Bedrooms: 2

Bathrooms: 1

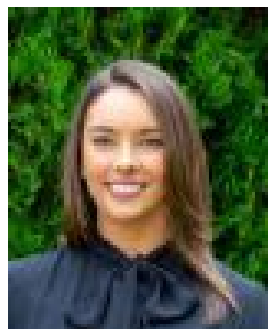
Parkings: 1

Area: 88 m2

Type: Unit



Allison Mifsud
0405138408



Danielle Jenkins
0459341200

\$720,000

Enjoying a highly convenient location within a short walk to Epping rail, schools, shops and restaurants, this solid full brick apartment offers well presented and spacious interiors. Peacefully set at the rear of a well maintained complex, this is the perfect opportunity.* Full brick apartment with open plan lounge & dining room* Two well-sized bedrooms both include built-in robes, main with ceiling fan* Living room with a/c opens to undercover balcony* Neat kitchen, internal laundry & large SLUG* Bathroom includes a bath tub and separate shower* Minutes walk to Epping railway, shops, restaurants and cafes* Zoned for Epping Heights Public, Cheltenham Girls, Epping Boys & Carlingford High SchoolsApprox. sizes -Total: 113.6sqm, Internal (incl. balcony): 88.3sqm, Garage: 25.3sqmApprox. outgoings - Strata: \$1,190.71pq, Council: \$316.20pq, Water: \$180.38pq