

16/19 Earls Court, Wantirna South, Vic 3152



Sold Unit

Friday, 6 October 2023

16/19 Earls Court, Wantirna South, Vic 3152

Bedrooms: 2

Bathrooms: 1

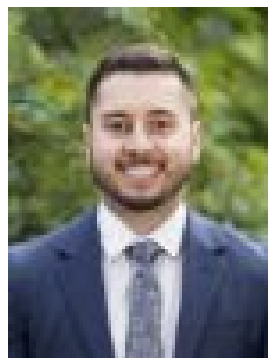
Parkings: 2

Area: 195 m2

Type: Unit



David Armstrong
0421583438



Chris Jara
0466980228

\$650,000

Capturing an incredible lifestyle design that draws on the ideals of space, this single level residence offers an easy-care layout that's perfectly suited to downsizers, young families and couples with plenty of space to entertain. Tucked in the Studley Park Estate, the unit's stylish dimensions deliver an instant sense of relaxation with modern flooring drawing you through to the spacious living and dining zone with natural light seeps in to provide an uplifting tone. The adjoining kitchen enjoys the sleek inclusions of stone benches plus a full array of Blanco appliances including an oven, gas stove and dishwasher. Bound to place a smile on the faces of those who love to entertain, sliding doors deliver a streamlined connection out onto a generous alfresco deck that sits in the low-maintenance courtyard. Away from the living zone you'll find the two bedrooms, each boasting carpet underfoot and built-in-robos, accompanied by a stunning family bathroom with vanity, rainfall effect shower and deep tub, plus a separate toilet. Adding to the appeal, the residence includes a full-sized laundry, split system heating/air conditioning, alarm, high ceilings plus a double garage with driveway parking for guests. Walking distance to Swinburne Uni (Wantirna), Westfield Knox, Blind Creek Trail, Wantirna South Primary, St Andrew's College, Waverley Christian College and bus stops, near the convenience of EastLink. Photo ID required at all open for inspections. David Armstrong 0421 583 438