

16/20 - 22 Reid Avenue, Westmead, NSW 2145



Unit For Rent

Saturday, 15 June 2024

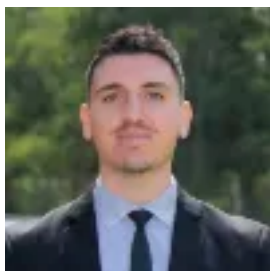
16/20 - 22 Reid Avenue, Westmead, NSW 2145

Bedrooms: 2

Bathrooms: 1

Parkings: 1

Type: Unit



Adriano Tassone

0298913333

\$580 per week

MODERN UNIT IN THE HEART OF WESTMEAD Located only a short stroll to Darcy Rd eateries, bus stop, Westmead Station & Hospital as well as main arterial roads is this modern unit with floating timber floors throughout. Features include:- Two well proportioned rooms, with balcony access to one rooms- Fully equipped bathroom- Separate lounge & dining area with a split system air condition- North facing balcony - Modern kitchen with gas cooking & dishwasher - Internal Laundry- Oversized basement garage provided"Ray White Parramatta Group - Parramatta|Oatlands|Northmead|Greystanes, its directors, employees and related entities believe that the information contained herein is gathered from sources we deem to be reliable. However, no representation or warranties of any nature whatsoever are given, intended or implied. Any interested parties should rely on their own inquiries."