

16/210 Penguins Head Road, Culburra Beach, NSW



2540

**Sold Townhouse**

Thursday, 9 November 2023

16/210 Penguins Head Road, Culburra Beach, NSW 2540

**Bedrooms: 3**

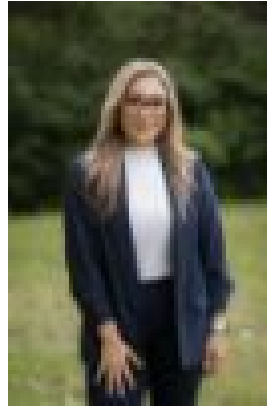
**Bathrooms: 2**

**Parkings: 2**

**Type: Townhouse**



Julie Gauci



Angela Henry  
0411481841

**\$880,000**

A phenomenal opportunity presents itself at 'Tilbury Cove'. Situated at one of Culburra Beach's most sought-after locations, this impressive double storey townhouse has all the elements of coastal charm. With modern features throughout, this beautiful property is ready for you to move into and will have you enjoying the sand and sea in no time. The layout has been carefully thought out with convenience and relaxation in mind. Consisting of three generously sized bedrooms, two bathrooms and an open plan kitchen and living area, there is ample room for your family and friends to stay. The master bedroom can be found on the ground floor, along with your own private ensuite bathroom and walk in wardrobe. Here you will also find a private garden and courtyard. The first floor presents a wonderful indoor/outdoor feel, with large windows and sliding doors wrapping around the home to bring in lots of natural light. This space has been designed to make the most of the gorgeous surrounds with your spacious dining and living area taking you out onto a seven metre balcony. After a long day at the beach you can sit back, relax and watch spectacular sunsets. The kitchen is a chef's delight, equipped with all modern appliances, generous counter top space, a breakfast bar and ample storage for all your cooking essentials. Featuring:- Modern stainless steel appliances- Split system air conditioning- Ceiling fans- Open plan kitchen, living and dining- Large master bedroom with private ensuite bathroom- Internal access to the laundry- Private courtyard- Built-ins in all bedrooms- Double lock up garage One of the features of this award-winning complex is the private timber stairway that walks you down to the pristine waters of Tilbury Cove. Take a cooling dip and walk along the shores of Culburra Beach. Warrain Beach is just 200 metres from the property, the perfect spot for fishing, stand up paddle boarding and prawning. You won't find a more convenient property - whether it's a holiday home that you can simply lock up and leave, or a relaxed coastal lifestyle without the maintenance - this is a must. 'Tilbury Cove' is Culburra Beach's premier strata development - it's easy to see why. Culburra Beach is known as the ultimate coastal town and holiday location, surrounded by magnificent bodies of water in every direction. You are just a short walk or drive to Lake Wollumboola, Curleys Bay, Crookhaven River or Warrain Beach. Nowra, the regional centre of the Shoalhaven, is only a 30-minute drive away and you are 2.5 hours south of Sydney. Get in touch today to book an inspection of this amazing property!