

16/22 Wattle Road, Hawthorn, Vic 3122

Apartment For Rent

Sunday, 2 June 2024



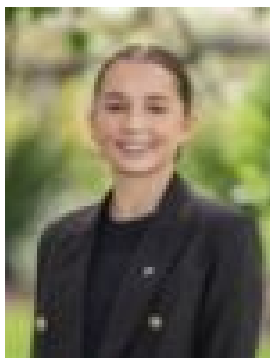
16/22 Wattle Road, Hawthorn, Vic 3122

Bedrooms: 2

Bathrooms: 2

Parkings: 1

Type: Apartment



Thea Toogood

0459555241

\$695 per week

Sample the style and sophistication of life in Melbourne's thriving inner east from the sun-swept spaces of this sleek rear-set apartment. Located just 5 kms from the CBD, and close to Swinburne University, the Yarra, as well as Hawthorn and Richmond's shopping and transport precincts, these 2 bedrooms/2-bathroom apartment enjoys city views from its 1st floor position in a contemporary boutique development. Both bedrooms (main with spacious WIR) access their own stylish ensuite bathrooms. An immaculate Miele/stone kitchen features in the generous living/dining areas and is flanked by a full-width entertainment terrace with treetops views to the city. Light and sunny, secure and stylish complete with timber floors, reverse heating/cooling, intercom entry, European laundry, basement parking and storage cage.*To register to inspect please click "Virtual Tour" or "Book Inspection" so we can keep you informed of inspection times and changes. *Photo ID may be required at open for inspections.