

16/524 New South Head Road, Double Bay, NSW

PPD REAL ESTATE

2028

Sold Apartment

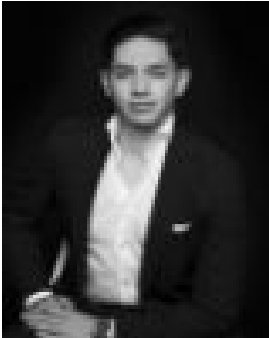
Monday, 28 August 2023

16/524 New South Head Road, Double Bay, NSW 2028

Bedrooms: 2

Bathrooms: 1

Type: Apartment



Nate Chacon
0283551143

Contact agent

A prized top floor setting, elegant proportions and exclusive harbour village setting combine in this spacious two-bedroom apartment to deliver a perfect lifestyle address. Set on the northern side of The Mayfair, the light-filled apartment has been tastefully renovated in keeping with its c1935 heritage with only one common wall and double-glazed windows delivering a sense of peace and privacy. One of 15 in the beautifully maintained block, the boutique apartment features convenient rear access via Sherbrooke Avenue leading directly down to the beachfront and across the foreshore to the city ferry. Stroll up to idyllic Redleaf Pool and Blackburn Gardens and enjoy breathtaking views over the harbour or wander down to Sydney's most cosmopolitan harbour village. -?Grand Art Deco block built c1935-?Deep setback with flagstone entry-?Top floor setting with a NW aspect-?2 large bedrooms with built-ins-?King-sized main bed, picture rails-?High ornate ceilings, chandeliers-?Sun-filled contemporary kitchen -?Integrated stainless steel appliances-?Bright bathroom with a bathtub-?Internal laundry and new carpeting-?One common wall, secure storeroom-?Rear access via Sherbrooke Avenue-?Low-maintenance harbourside living -?200m stroll to Redleaf Pool and cafe-?600m to Kiaora Lane's dining scene-?Pleasant ferry commute into the city