

16 Byambee Court, Grovedale, Vic 3216



House For Sale

Saturday, 17 February 2024

16 Byambee Court, Grovedale, Vic 3216

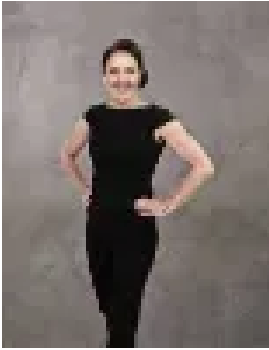
Bedrooms: 3

Bathrooms: 2

Parkings: 1

Area: 208 m2

Type: House



Michelle Winckle
0352411488



Sophie Spowart
0478957905

\$675,000 - \$725,000

This beautiful architect designed home will win you over the moment you step inside. Only 6 years old, this custom build by JM Homes Surf Coast is all about sustainable lifestyle living, boasting a 6 star energy rating with a 2000L water tank on a low maintenance block. Freshly painted and with new carpets, there's nothing to do except move in! As you enter, you'll be greeted by the heart of home, a generous open plan living, kitchen and dining that overlooks a cosy courtyard. Upstairs is a second family living space with ample storage and 2 spacious bedrooms. It's clear to see that no detail was spared in this premium build with double glazed windows, high ceilings, quality appliances, central heating and an air conditioner in the upstairs living. The home is networked with Cat 6 cables to provide access to high speed internet throughout, great for those working from home. Conveniently located within walking distance to schools, Grovedale Medical Centre, Community Care Chemist and shops. Only minutes away from the Waurm Ponds shopping centre, train station and the Melbourne Ring Road, perfect for those that need to commute. The beautiful Surf Coast beaches is only 15 minutes away. This immaculately presented home in a quiet court is the ideal home for first home buyers, professional couples or those wanting a low maintenance lifestyle while living in a unique build.*All information about the property has been provided to Hayeswinckle by third parties. Hayeswinckle has not verified the information and does not warrant its accuracy or completeness. Parties should make and rely on their own enquiries in relation to this property.