

16 Carolina Close, Elanora, Qld 4221

Coastal

Sold House

Friday, 3 November 2023

16 Carolina Close, Elanora, Qld 4221

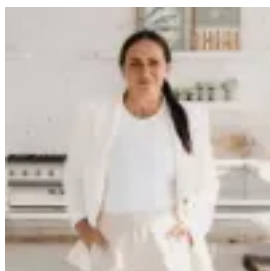
Bedrooms: 3

Bathrooms: 2

Parkings: 2

Area: 688 m2

Type: House



Emisha Canning
0755266999

\$1,330,000

Nestled in a peaceful, family-friendly cul-de-sac, this single-level sanctuary radiates contemporary comfort and charm. Presiding over a fully fenced 688m² block that's a short stroll from Pine Lake, a modern, monochromatic-toned kitchen takes centre stage, featuring premium Bosch appliances. Adjacent, an open and airy living and dining zone encourages togetherness, while an easy flow connects this social hub to the outdoors. At the front, relax on the sunny deck and watch kids and pets play, with the backyard boasting a covered alfresco entertaining area. When you're not hosting guests, take advantage of the large pool that sparkles in the sunshine and promises an endless summer of fun. Three bedrooms also grace the floorplan, including a generously sized, sun-lit master suite with an ensuite and a walk-in robe. Two additional bedrooms with built-in robes are serviced by the main bathroom, showcased by bold feature tiling and beautifully complemented by a timber-topped vanity. A location to love, make the most of being within walking distance to Pine Lake, perfect for a spot of fishing or perhaps a kayak or paddle board adventure. Temptingly, Elanora State School, C&K Community Kindergarten, Elanora Oval and Skate Park are also accessible on foot, plus it's just a 650m stroll to The Pines, Elanora shopping precinct. For those times the sand and surf beckons, Palm Beach is ready for in you approx. 3km. Don't miss the opportunity to make this happy haven your next home - arrange an inspection today. Property Specifications:• Single level sanctuary, showcasing contemporary comfort and charm• Peaceful, family-friendly cul-de-sac, walking distance to Pine Lake• Fully fenced 688m² block• Modern, monochromatic-toned kitchen with breakfast bar, gas cooking and Bosch appliances• Open and airy living and dining zone, flowing freely outdoors• Generously sized, sunny master suite with ensuite and walk-in robe• Two remaining bedrooms with built-in robes• Striking main bathroom with bold feature tiling, offset by timber-topped vanity• Air-conditioning and ceiling fans throughout• Covered alfresco entertaining area• Spacious front yard with sunny decking, offers a secure play area for kids and pets• Large pool sparkles in the sunshine • Double garage plus driveway parking• Approx. 550m walk to Elanora State School, C&K Community Kindergarten, Elanora Oval and Skate Park • 650m stroll to The Pines, Elanora shopping precinct• Approx. 3km from the sand and surf of Palm Beach Disclaimer:We have in preparing this information used our best endeavours to ensure that the information contained herein is true and accurate but accept no responsibility and disclaim all liability in respect of any errors, omissions, inaccuracy or misstatements that may occur. Prospective purchases should make their own enquiries to verify the information contained herein.