

**16 Cosgrove Street, Tarneit, Vic 3029**



**House For Sale**

Thursday, 25 April 2024

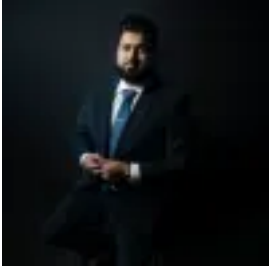
16 Cosgrove Street, Tarneit, Vic 3029

**Bedrooms: 4**

**Bathrooms: 2**

**Parkings: 2**

**Type: House**



Mohit Batra  
0391909991

## Contact Agent !!

Unique & Co. Real Estate Group is pleased to present this exquisite family home at 16 Cosgrove Street, Tarneit VIC 3029, situated in the highly sought-after Emerald Park Estate in Tarneit. The thoughtfully designed layout of this property will captivate first-time homebuyers, investors, and empty nesters alike. Carefully handpicked for your consideration, this outstanding asset combines luxury, prime location, and convenience. Currently under construction, this brand new home comes with a builder's warranty and is nestled in the prestigious "Emerald Park Estate" within the rapidly expanding Tarneit Suburb. This stunning family home is conveniently located near a wide range of amenities, making it an appealing opportunity for first-time homebuyers and investors. Tarneit's prestigious Emerald Park Estate is just a short drive away from Tarneit Shopping Centre, Tarneit P-9 College, and Tarneit Station. Here are some amenities near the Estate: \* 29 acres of top-notch sporting facilities \* A mere 3-minute drive from Tarneit Gardens Shopping Centre \* Just 4 minutes away from Tarneit P-9 College \* Conveniently located 5 minutes from Tarneit Station and Tarneit Central Shopping Centre \* Only 13 minutes away from Westbourne Grammar School \* Merely 14 minutes away from Pacific Werribee Plaza Mall

Special Features: \* 2700mm high ceilings \* Master Bedroom with en-suite (double vanity) and walk-in robe \* Three additional rooms with built-in robes and pigeon boxes \* 900 mm Kitchen appliances, including a Dishwasher \* 60mm stone Benchtop with waterfall and stone splashback in Kitchen - 20mm stone Benchtop in Laundry and Bathrooms \* Under-mount Sink \* Floor-to-ceiling tiles \* Soft Closure Cabinets throughout the house \* LED Downlights throughout \* High-end fixtures and furnishings \* Remote-controlled Double Garage with timber-look panel \* Exposed Driveway and much more. This is an excellent opportunity to embark on the path of property ownership and enter the real estate market at an affordable price. Don't miss out on this opportunity! Contact Mohit at 0483 000 009 to arrange an inspection, as this property won't be available for long. For an up-to-date copy of the Due Diligence Check List, please visit the following link: <http://www.consumer.vic.gov.au/duediligencechecklist>

DISCLAIMER: All stated dimensions are approximate only. The information provided is for general guidance purposes and does not constitute any representation on the part of the vendor or agent. Images are for illustrative purposes only