

16 Crestwood Road, Glass House Mountains, Qld 4518



Sold House

Tuesday, 26 September 2023

16 Crestwood Road, Glass House Mountains, Qld 4518

Bedrooms: 4

Bathrooms: 3

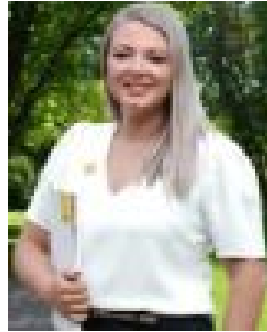
Parkings: 5

Area: 2501 m2

Type: House



Donnie Plant
0435825942



Jasmine Ruhle

\$1,725,000

Donnie Plant and Jasmine Ruhle are excited to introducing a new level of quality and sophistication at the home of 16 Crestwood Road, Glass House Mountains! This impressive family home defines contemporary living reaching new heights of intelligent design & luxurious simplicity. Located in a new peaceful neighbourhood only walking distance from the school, this property offers the perfect blend of luxury, nature and convenience. Enjoy the breathtaking views and embrace the serenity of the Glass House Mountains from multiple directions. Boasting 4-bedrooms, 3-bathrooms, multiple living areas, a large shed, all wrapped up on 2,501m² of prime land, this home is the epitome of luxury and comfort with plenty of space for the whole family. When you step inside you will be captivated by the exquisite architecture and interior design that this beautiful spacious family and entertainers home has to offer. Kick back with a chilled beverage while you watch the kids splash in the salt pool, or fire up the barbecue with family and friends, it's the ultimate home for those who love to entertain. Features of this property include: • Luxury king-sized master bedroom with walk-in robe, en-suite with rainfall shower and bath. • 3 additional bedrooms with built in robes, one bedroom complete with ensuite & built in robes. • Home office / study / library • Main bathroom with both shower and bath • Separate toilet • Gourmet Chef's style kitchen with gas cooking, loads of cupboard space, stone bench tops, stainless steel appliances, quality tapware, dishwasher, fridge space and fully equipped butler's pantry • Internal laundry with heaps of storage space • Large open plan living & dining • Multiple living areas • Ducted air-conditioning and ceiling fans throughout • Luxurious Dolomites polished tiles • Double garage • 8 x 10 Shed with 3 electric roller doors, one door is 3.5m high to accommodate caravan or boat. • Outdoor entertaining area • In-ground salt concrete pool with pool fencing • 2,501m² of land • Side access • Multiple mountain views • Landscaped with low-maintenance gardens Location: • Walking distance to the Glass House Mountains State school • Short 3-minute drive to the IGA, CJ's, Glass House Tavern, Glass House Bowls club, Post office, Cafe's, children's playgrounds etc • Walking distance to school bus routes • 10 minutes to Australia Zoo • 20 minutes to Aussie World • 30 mins to the stunning Sunshine Coast beaches • 60 mins to Brisbane If you're seeking a home that is sure to impress, do not miss your chance to view this jaw dropping masterpiece. It will not last long. Contact Donnie on 0435 825 942 or Jasmine on 0432 348 875 today for more information and to arrange a viewing.***

Disclaimer: Whilst every care has been taken in the preparation of this marketing, Ray White Beerwah will not be held liable or responsible for any errors in information displayed. All parties should carry out their own enquiries. ***