

16 Curlew Close, Melton, Vic 3337



House For Sale

Friday, 17 May 2024

16 Curlew Close, Melton, Vic 3337

Bedrooms: 3

Bathrooms: 1

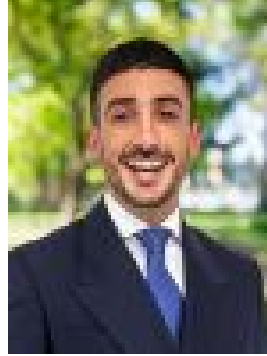
Parkings: 2

Area: 587 m2

Type: House



Ricky Frew
0397468899



Shane Spiteri
0353101333

\$439,000 - \$479,000

Situated on a large 585m² (approx.), this property holds the opportunity for a tasteful renovation or a great investment to add or start your portfolio. Located in a highly sought after pocket in Melton close by to all levels of schooling, childcare and preschool centres, parks, freeway access, and only a short distance to Woodgrove Shopping Centre, the positioning of this home is hard to beat. Walking through the front door you are greeted with the large living area which features a refrigerated cooling unit and a split system for heating and cooling. This is further accompanied by the meals area perfectly situated next to the kitchen, which features ample bench and cupboard space, stainless steel appliances and gas cooktop. The three bedrooms located within the property are all generously sized and feature built in robes creating enough space for the whole family, while all being serviced by the updated central bathroom that hosts floor to ceiling tiles, and shower bath. Outside this property is a large backyard, catering perfectly to both kids and pets alike to run and play, or provide plenty of accommodating space for a Granny Flat (STCA), or an extended entertaining area! This property is currently tenanted to an amazing tenant who pays \$1325 per calendar month on a month to month basis! Extra features of this property include: split system cooling and heating, air conditioner, ample bench and storage space, stainless steel appliances and so much more! This great opportunity will not last long so call today to book your inspection! (Photo ID is Required at all Open For Inspections) At YPA Melton "Our Service Will Move You" **DISCLAIMER:** Every precaution has been taken to establish the accuracy of the above information but it does not constitute any representation by the vendor/ agent and agency.