

16 Ebsworth Street, Mount Lawley, WA 6050

halyn property

House For Rent

Friday, 10 May 2024

16 Ebsworth Street, Mount Lawley, WA 6050

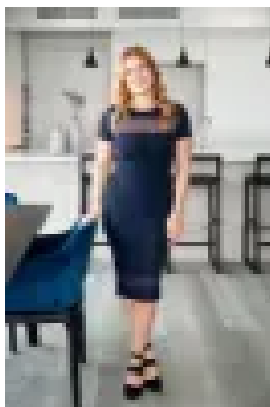
Bedrooms: 4

Bathrooms: 2

Parkings: 2

Area: 491 m2

Type: House



Tyla Dyer
1300149116

\$1,250 per week Unfurnished

Introducing your ideal family home, meticulously maintained and ready for you to move in! This UNFURNISHED charming Edwardian brick and iron residence exudes timeless elegance from its picturesque white picket fence to its meticulously landscaped gardens and inviting bull-nose front verandah. Seamlessly blending classic charm with modern comforts, this home offers a lifestyle of convenience and sophistication. Featuring four spacious bedrooms, including a luxurious master suite complete with an ensuite bathroom and walk-in robe, along with a formal lounge and a centrally located second bathroom servicing the minor bedrooms, this home caters perfectly to family living. Character features such as original timber boards, decorative plasterwork, and a fireplace in the lounge complement modern amenities like reverse cycle air-conditioning and temperature-controlled hot water, ensuring comfort all year round. The heart of the home lies in the expansive kitchen overlooking both the outdoor entertaining area and a generously sized full-height living area. Boasting ample cupboard space and top-of-the-line European appliances, this kitchen is a dream for culinary enthusiasts and entertainers alike. Step outside to the covered, timber-lined outdoor entertaining area with a ceiling fan, perfect for hosting gatherings year-round. This property is also pet friendly for the right applicant! Additional highlights include off-street parking, a large two-car covered carport with abundant storage space, and meticulous attention to detail throughout. Enjoy the convenience of living just a short stroll from the river, with easy access to the stadium, dining options at Claisebrook Cove, and excellent freeway connections. Nearby walkways, cycle paths, and parks offer opportunities for outdoor recreation and leisure. This hidden gem is equipped with a range of features for your comfort and security, including an alarm system, bore reticulation, Rinnai temperature-controlled HWS, water purifier, Bosch appliances, Crimsafe security doors, and more. Don't miss your chance to experience the perfect blend of character and contemporary living in this beautiful family home. Register your interest in viewing and discover the unmatched lifestyle awaiting you in this exclusive enclave. Available NOW!