

16 Evergreen Court, Cranbourne North, Vic 3977

House For Sale

Thursday, 18 April 2024



16 Evergreen Court, Cranbourne North, Vic 3977

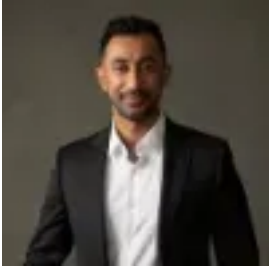
Bedrooms: 5

Bathrooms: 2

Parkings: 3

Area: 672 m2

Type: House



Vas Selvaraj
0359913888

\$850,000 - \$920,000 (3 BIG Living Areas)

Located in the highly desirable Waverley Park Estate and close to all amenities, this loving family home boasts 4 bedrooms + Study, 3 extensive living zones, spacious kitchen, triple garage, and the ultimate low-maintenance lifestyle! From the entry of the home, you have the formal lounge/dining through to the light filled open plan living and dining area boasting the quality kitchen with stainless steel appliances, tiled splashback, pendent lights, large island with breakfast bar, built-in pantry, and plentiful storage & bench space. A formal living room provides a private space for mum and dad to relax, while the spacious rumpus/theatre room located at the rear of the home is ideal for escaping with a good book or family movie nights. The indulgence continues with the master bedroom featuring a large walk-in robe and ensuite with dual vanities, oversized shower with dual showerheads, and toilet. Remaining three large bedrooms are complemented by an equally impressive family bathroom with separate toilet and create abundant space for all family members to find privacy. The large dining and family area leads out to the grand alfresco via sliding doors, creating a seamless transition of indoor/outdoor living. Intelligently designed to fuse effortless low-maintenance living and modern family functionality, you will love coming home to your own relaxing heaven! Additional features include a family-sized laundry and a triple lock up garage with rear roller door. This property is central to all necessary amenities you could ever need, with local bus stops and child friendly parkland only moments away. Surrounded by established homes with convenient access to South Gippsland Highway enroute to Lynbrook Village and Thompson Parkway Shopping Centre, Merinda Park train Station, Courtenay Gardens Primary school, Lyndhurst Secondary College, and medical centres! You will also find within a short drive Casey RACE, Cranbourne Park Shopping Centre, Cranbourne Train Station & South Gippsland Hwy for an easy commute. Properties like this do not last so please contact the team today to organise an inspection.

Features: - Gas ducted heating - Evaporate cooling - Open plan kitchen - Formal lounge - Rumpus/theatre room - Downlights - Family sized laundry - Blinds & curtains - Low maintenance garden - Garden sheds - Large alfresco - Triple garage with rear roller door - Land size 672m²

Privacy: Your entry to this property provides consent to the collection and use of personal information for security purposes. It may also be used to provide you with further information about the property, other properties and services marketed by Casey Estate Agents. Please advise our consultant if you do not wish to receive further information. Our full privacy statement is available at our office or online at www.caseyestateagents.melbourne. This is an advertising brochure only. Casey Estate Agents has prepared this brochure to the instructions of the vendor in order to advertise the property. We have not verified the accuracy of the information contained within. You should not rely on this brochure as proof of the facts stated. You should independently verify the matters stated in this brochure before making your decision to purchase. Casey Estate Agents accepts no liability or responsibility for claims arising from a reliance of the information herewith.