

16 Golding Lane, Lightsview, SA 5085



Townhouse For Sale

Wednesday, 3 April 2024

16 Golding Lane, Lightsview, SA 5085

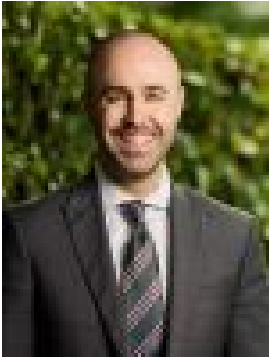
Bedrooms: 3

Bathrooms: 2

Parkings: 1

Area: 141 m2

Type: Townhouse



Nick Borrelli
0861871302



Nik Ilic
0421162383

Auction On-Site Saturday 20th April 4:30PM (USP)

Introducing a captivating abode nestled at 16 Golding Lane, Lightsview. Crafted with inspired design and meticulous craftsmanship, this luxury townhouse exudes sophistication at every turn. Step into a realm of contemporary elegance spread across three expansive levels. Thoughtful architectural design and chic decor create a welcoming ambiance throughout the home. Revel in the allure of spacious living areas adorned with premium fixtures, promising a lifestyle of opulence and comfort. Located amidst a vibrant enclave of modern residences in the heart of Lightsview, this residence offers unrivaled convenience. Embrace the lush greenery of nearby parks and reserves, while the renowned Jibbi & Co beckons for your daily dose of artisanal coffee just a leisurely stroll away. The ground floor welcomes you with a light-filled open plan living, kitchen, and dining area, seamlessly flowing into a private courtyard. The kitchen boasts ample white cabinetry, a dishwasher, and a gas cooktop, catering to both functionality and style. Ascend to the first floor, where tranquility awaits in the form of the bedrooms. The master retreat features a walk-in robe, ensuite, and a spacious balcony overlooking the serene park. Bedrooms 2 and 3 offer built-in robes and share a well-appointed bathroom with a vanity, bathtub, and separate toilet. Elevating your living experience, the second floor presents a versatile living area or rumpus room, complete with a ceiling fan and reverse cycle air conditioning. Convenience is key with laundry amenities conveniently located on the ground floor. Completing the ensemble is a single garage with an automatic panel lift door, ensuring effortless entry and security. Embrace the epitome of modern living with the Lightsview toddler playground and East Parkway Reserve right at your doorstep. Indulge in a lifestyle of luxury and convenience at 16 Golding Lane, Lightsview. Your dream home awaits.

Auction Pricing - In a campaign of this nature, our clients have opted to not state a price guide to the public. To assist you, please reach out to receive the latest sales data or attend our next inspection where this will be readily available. During this campaign, we are unable to supply a guide or influence the market in terms of price.

Vendors Statement: The vendor's statement may be inspected at our office for 3 consecutive business days immediately preceding the auction; and at the auction for 30 minutes before it starts.

RLA 322799 Disclaimer: As much as we aimed to have all details represented within this advertisement be true and correct, it is the buyer/ purchaser's responsibility to complete the correct due diligence while viewing and purchasing the property throughout the active campaign.

Property Details: Council | PORT ADELAIDE ENFIELD Zone | MPN - Master Planned Neighbourhood \ EAC - Emerging Activity Centre Land | 141sqm (Approx.) House | 254sqm (Approx.) Built | 2015 Council Rates | \$TBC pa Water | \$TBC pq ESL | \$TBC pa