

16 Hansford Parade, Bilgola Plateau, NSW 2107

House For Sale

Sunday, 31 March 2024

16 Hansford Parade, Bilgola Plateau, NSW 2107

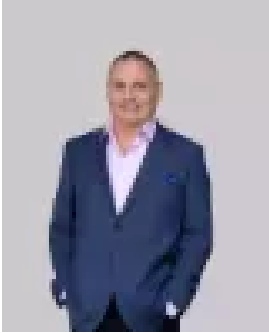
Bedrooms: 3

Bathrooms: 2

Parkings: 2

Area: 696 m²

Type: House



Steven Crooks
0405218888

Contact Agent

Poised above Refuge Bay with simply breath-taking panoramas over the yacht-jewelled waters of Pittwater to the leafy ridges of the Ku-ring-gai Chase National Park, this superbly designed residence offers an inspiring blank canvas from which to craft an enchanting designer sanctuary. Placed on 696sqm of sloping tropical gardens, its peaceful and private tropical setting is only moments from village shopping, the primary school and Clareville Beach.

- Selling for the first time in 24 years and immaculately maintained
- Scope to refurbish or reconfigure and further capitalise (STCA)
- Jaw-dropping Pittwater panoramas and sunny northwest aspect
- Gaze over an ever-changing yachtsman's paradise to Scotland Island
- Views extend to national parkland and dreamy big-sky sunsets
- Generous living and dining rooms with floor-to-ceiling views
- Easy flow to a sunny covered deck with mesmerising panoramas
- Stone kitchen with dishwasher also captures stunning views
- Casual living/dining area by the kitchen, utility room or office
- Large bedrooms with built-ins, main bedroom with ensuite
- Modern white bathroom with separate shower and bathtub
- Exposed brick feature walls, gas fireplace and air conditioning
- Moments from Bilgola Plateau Public School and Village
- Close to beaches at Clareville, Bilgola, Avalon and Newport
- Minutes to shopping at Newport, Avalon and Mona Vale
- Double carport/near-level entry to residence, plenty of storage