

16 Helicia Avenue, Figtree, NSW 2525

STONE

House For Rent

Tuesday, 23 April 2024

16 Helicia Avenue, Figtree, NSW 2525

Bedrooms: 3

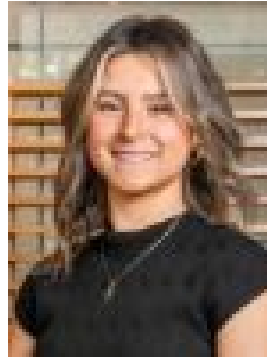
Bathrooms: 1

Parkings: 2

Type: House



Chloe Gee
0242281622



Charli Carriage
02 4228 1622

\$750 per week

Showcasing an unprecedented level of space and versatility is this stunning family home of expansive proportions, capturing breathtaking area views and completely redefining family living. With its versatile floor plan and flexibility this house provides unparalleled convenience, being positioned in a quiet family enclave and being only a minutes drive to the CBD and shopping precinct this home offers unrivaled family living.- Large north facing living area flowing to the front entertainers verandah- Separate living area flowing to the generous alfresco area and low maintenance rear year- Modern kitchen boasting ample storage and quality s/steel appliances including a dishwasher- Three good sized bedrooms, built-in robes to three, serviced by a large central bathroom- Recently renovated bathroom and separate toilet- Double lock-up garage, new renovation, polished timber floors, internal laundry- Unparalleled location, quiet neighbourhood, quality appointments- 12 month lease availableTo apply please copy the link below into your browser<https://2apply.com.au/agency?n=Stonellawarra>