

16 Honey Lane, Batesford, Vic 3213

Sold Residential Land

Tuesday, 13 February 2024

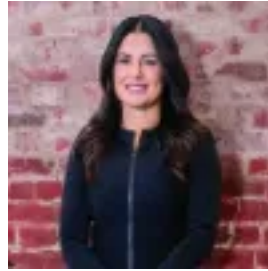
16 Honey Lane, Batesford, Vic 3213

Area: 4394 m2

Type: Residential Land



Aisha Coe
0439888837



Georgia Bryden
0421916691

Contact agent

Occupying just over 1 acre, this is the perfect opportunity to build your dream country haven in old leafy Batesford area of Dogs Rocks Estate. A relatively flat block surrounded by established foliage, this location is perfect for the peaceful countryside lifestyle you have been looking for. Almost titled and ready to go this block is in the last stages of subdividing and is available to reserve now. This idyllic country setting places you moments away from the Moorabool River and popular Batesford Hotel. The Dog Rocks Sanctuary inspires outdoor adventures, while the region's finest wineries promise to elevate your weekends. Families will appreciate easy access to Rollins Primary School (Batesford Campus), Covenant College and Kardinia International College. A short drive will place you in the vibrant heart of Geelong, while superior Ring Road access will find you cruising over the West Gate Bridge in under an hour. - Located within a short drive to Geelong - Easy access to ring road to Melbourne in under 1 hour - Relatively flat and desirable shaped block - No neighbours to the back of the block - Established trees and foliage create privacy - Located in already established Dogs Rocks Estate - Batesford Hotel within a short drive - No through road to Honey Lane ensures extra privacy - Short Drive to Kardinia College - Local School Bus pick up and drop off to Batesford