

16 Kruse Place, Melba, ACT 2615



Sold House

Saturday, 17 February 2024

16 Kruse Place, Melba, ACT 2615

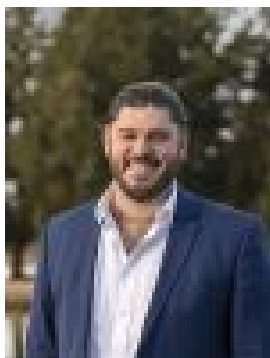
Bedrooms: 4

Bathrooms: 3

Parkings: 2

Area: 805 m2

Type: House



Jake Battenally
0413313676



Chris Dixon
0414819377

\$980,000

This beautifully presented family home is set in a quiet cul-de-sac amongst other quality homes. With just over 200sqm of living, the heart of the home truly is the striking kitchen that has been recently renovated. Adjoining the kitchen is the open plan living and dining area that flow out to the large covered deck, the perfect place for entertaining family and friends. A real standout for the open is the segregated parent's retreat located upstairs and offering a living space, study nook, ensuite, walking in robe and to top it off a private balcony with lovely views. Back downstairs you will find the den and the secondary bedrooms, one offering an ensuite and all with built in robes. Outside you will find plenty of space for the children to run and play in the yard, while there is also scope to add your own touches to the garden. Located just a short walk from the Melba shops with 7eleven, IGA and local restaurants as well as Westfield Belconnen shopping centre is just a 10 minute drive away. -? Massive parent's retreat -? Stunning renovated kitchen -? Floating timber flooring throughout -? Ducted electric heating and cooling downstairs - Reverse cycle air conditioner upstairs -? Plenty of storage -? 805sqm block -? Garden shed

Disclaimer: All information regarding this property is from sources we believe to be accurate, however we cannot guarantee its accuracy. Interested persons should make and rely on their own enquiries in relation to inclusions, figures, measurements, dimensions, layout, furniture and descriptions.