

16 Lilicur Road, Montmorency, Vic 3094

House For Sale

Friday, 9 February 2024

JellisCraig

16 Lilicur Road, Montmorency, Vic 3094

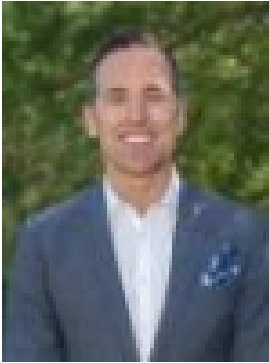
Bedrooms: 3

Bathrooms: 1

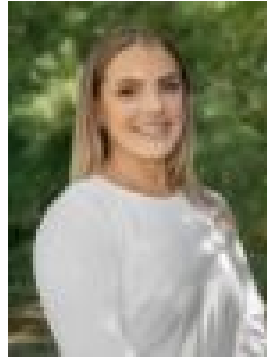
Parkings: 1

Area: 506 m2

Type: House



Scott Nugent
0438054993



Hayley White
0423523926

\$880,000 - \$940,000

EXPRESSIONS OF INTEREST CLOSING TUESDAY 5TH MARCH AT 4PM (UNLESS SOLD PRIOR) Brimming with classic style, this well-presented home is ready for young families, first-time buyers, downsizers or those looking to invest in their future. Freshly painted throughout with a highly functional layout, the lounge room is drenched in northerly light and provides a great place to relax, stepping through to a tasteful kitchen featuring a breakfast bar that seamlessly connects the dining zone, electric appliances and terrific storage. All three bedrooms are generous in size and feature built-in robes, serviced by a central family bathroom and full-size laundry. Outdoors, you will find a secure backyard with a paved alfresco zone, with property highlights including ducted heating, split system air conditioning, ceiling fans and a carport. The very best of Montmorency and beyond is at your fingertips, a short walk from Were Street shops, cafes and Montmorency Train Station, within the catchment zone for Sherbourne Primary School and Montmorency College, and a short distance from Greensborough Plaza, Eltham Village and leisure facilities including WaterMarc, Heidelberg Golf Club and Diamond Valley Miniature Railway.