

16 Margaret Street, Moorabbin, Vic 3189



House For Sale

Thursday, 30 May 2024

16 Margaret Street, Moorabbin, Vic 3189

Bedrooms: 3

Bathrooms: 1

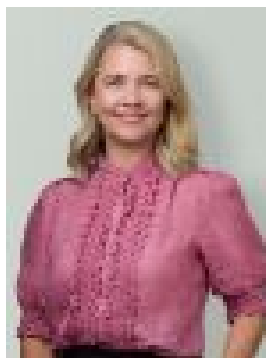
Parkings: 3

Area: 755 m2

Type: House



Ryan Castles
0395219800



Melissa Philip
0395219800

\$1,290,000-\$1,390,000

A prolific parkside opportunity, this significant 755 sqm approx. allotment is one of the finest redevelopment prospects you'll find (Subject to Council Approval). Backing onto the parkland of Moorabbin Reserve, it's a prime site to create a multi unit development or to rebuild your dream family home with park access (STCA). Comfortable for the short term, the current 3 bedroom brick classic enjoys an endearing lounge and dining room, a casual family area and a double garage in the deep rear garden. Walk to Moorabbin Central and the train. - Rebuild or redevelop on this superb 755 sqm approx. allotment (STCA)- Potential for an oversized duplex or back to back townhomes (STCA)- Currently housing 3 sizeable bedrooms each with built in robes- Immaculate bathroom, classic laundry and separate toilet - Gas heaters, evaporative cooling, deep double garage/storage- Seconds to the dog park, walking trail and RSEA Park - St Kilda FC- Close to Holmesglen TAFE and Tucker Road Bentleigh Primary School- Walk to Bricker Reserve athletics track, sporting oval and playground- Moments to Woolworths, cafes, restaurants and essential services