

16 Neptune Crescent, Brassall, Qld 4305



House For Rent

Thursday, 16 May 2024

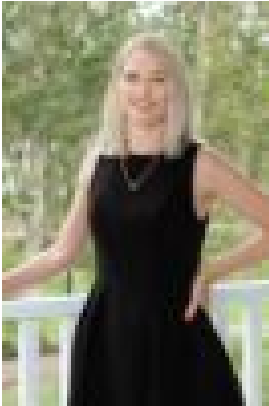
16 Neptune Crescent, Brassall, Qld 4305

Bedrooms: 4

Bathrooms: 2

Parkings: 2

Type: House



KIMBERLEY BUTTERWORTH
0734473199

\$570 PER WEEK

TO REGISTER for a viewing or apply online please copy & paste the following link into your internet browser - snug.com/apply/raywhitebrookwaters This delightful property offers a perfect blend of comfort and functionality, providing ample space for the whole family to enjoy. With its ideal layout and prime positioning, this home promises a lifestyle of ease and accessibility! **Property Features:-** Four well sized bedrooms all with built in wardrobes and ceiling fans- Master bedroom with private ensuite and walk in wardrobe - Main bathroom with bathtub, shower and separate toilet- Spacious kitchen equipped with quality appliances including dishwasher- Large open plan living area with air conditioning and direct access to outdoor entertainment deck - Covered outdoor entertainment deck overlooking the fully fenced backyard - Double lock up garage with ample off-street parking**Location Features:-** 4 minutes to Brassall State School- 6 minutes to Brassall Shopping Centre- 8 minutes to Ipswich Grammar School- 10 minutes to Riverlink Shopping Centre- 16 minutes to Bremer State High School**PLEASE NOTE**, if you do not register online, we cannot notify you of any time changes or cancellations to inspections. Prior to applying for this property please ensure you have conducted your own enquiries, with your preferred supplier, regarding the availability of NBN or any other service you may require.**Disclaimer:**We have in preparing this advertisement used our best endeavours to ensure the information contained is true and accurate but accept no responsibility and disclaim all liability in respect to any errors, omissions, inaccuracies or misstatements contained. Prospective renters should make their own enquiries to verify the information contained in this advertisement.