

16 Neptune Drive, Point Cook, Vic 3030



Sold House

Monday, 18 March 2024

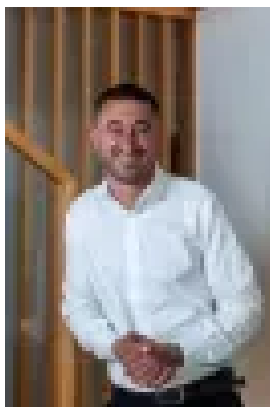
16 Neptune Drive, Point Cook, Vic 3030

Bedrooms: 4

Bathrooms: 2

Parkings: 2

Type: House



Ray Harb

0393959999

Contact agent

Nestled within the ever so popular Boardwalk estate, set on approx 723m² land and in a great part of Point Cook's best pocket, lies an impressive residence that defines modern luxury. This stunning 4 bedroom plus study, 2-bathroom home with 2 double garage and side access is a testament to elegance and convenience, offering a lifestyle of unparalleled comfort. Situated minutes away from the freeway and within a stone's throw from parks, Point Cook town centre, Williams Landing train station, primary and high schools, child care centre, bus stops this property epitomizes convenience at its finest. Transforming this already stunning residence into your dream home is just a brushstroke away. With so much potential increase your living space to unparalleled heights of comfort and style. Embrace the opportunity to imprint your personal touch and create a haven that reflects your unique taste and vision. Let every step be cushioned in elegance, and every wall radiate with a renewed sense of vibrancy. Make this house truly yours, from floor to ceiling, with the perfect blend of colour and texture. Welcome home to a canvas of endless possibilities. Master Bedroom with WIR and ensuite boasting a large shower. 3 spacious bedrooms offering ample accommodation. Great separate formal lounge/rumpus for intimate gatherings. Large kitchen equipped with stainless steel appliances, gas cooktop and superb pantry. Excellent sized meals and huge family areas fostering a sense of connection and warmth. Lovely central bathroom, separate laundry, and toilet. Double garage with remote control, internal, and rear access, complemented by side access for caravans and boats. Ducted heating and cooling, window furnishings, flyscreens, and plenty of backyard space.