

16 Nicholas Court, Lysterfield, Vic 3156



Sold House

Monday, 4 September 2023

16 Nicholas Court, Lysterfield, Vic 3156

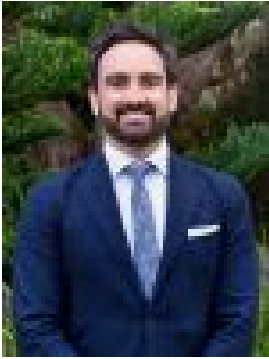
Bedrooms: 4

Bathrooms: 2

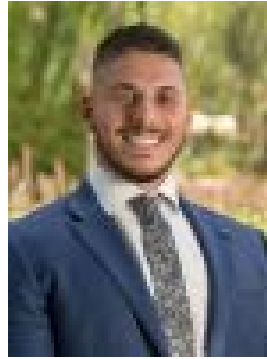
Parkings: 2

Area: 739 m2

Type: House



Ben Thomas
0422273826



Tim Milaki
0413336177

\$1,095,000

THE PROPERTY Privately tucked away in a serene cul-de-sac, this delightful four-bedroom hideaway could not be better placed for quiet and connected living. You'll be immediately impressed by the contemporary finishes and inviting interiors, with the light-filled living and dining domain enhanced by a fireplace and stylish laminate floors. Centrally located, the crisp modern kitchen boasts stainless steel appliances and a sun-splashed garden outlook, with the adjoined family room delivering valuable versatility and space. Generous in size, the luxe master bedroom flaunts a sleek ensuite and direct access to a private rear deck, with three additional bedrooms offering ample accommodation for all. Enjoy the abundant sunshine which flows across the north-facing backyard while relaxing on the expansive paved patio, with landscaped gardens providing a tranquil backdrop. Further fabulous additions of ducted heating and refrigerated cooling, plus a double remote garage, make this impressive family home a must-see.

THE FEATURES Spacious four-bedroom, two-bathroom family home
Master bedroom boasts luxe en suite & private deck
Three further bedrooms include built-in robes
Family bathroom flaunts shower, bath, vanity & toilet
Ducted heating, Jetmaster fireplace & refrigerated cooling
Remote double garage plus additional off-street parking
Generous garden block with sun-splashed paved alfresco

THE LOCATION Perfectly positioned in a quiet court in a prized family neighbourhood, just a short stroll to Lysterfield Primary and Lakesfield Reserve, with local shopping nearby at Rowville Lakes Village, and Stud Park, Westfield Knox, golf courses and the Eastlink Freeway all easily accessible.

On Site Auction Saturday 23rd of September at 3.30pm