

16 Oldenburg Drive, Bonnie Brook, Vic 3335

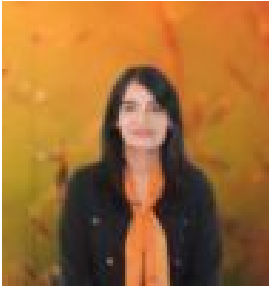
Sold Residential Land

Tuesday, 19 December 2023

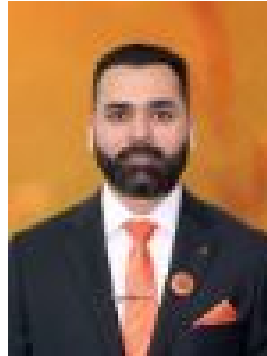
16 Oldenburg Drive, Bonnie Brook, Vic 3335

Area: 448 m2

Type: Residential Land



Babli Kundu
0452235683



Harpreet Mangat
0416412414

\$436,000

Bal Real Estate Werribee proudly presents an opportunity to build your dream home on 448 sqm(14m x 32m) perfectly rectangular block in a prime location of the Bonnie Brook! True West means different things to different people. For Bonnie brook, True West is all about being real. Bonnie brook is made up of real people, with real experiences who make real connections within a diverse but close-knit community. The ultimate vision for Bonnie brook is a community teeming with an enviable array of modern sports and recreation facilities, an asset for both the local community and the surrounding district. Open space abounds for active pursuits, with native woodlands and wetlands, parkland, adventure playgrounds and pocket parks all close to home. Bonnie brook has been carefully designed to connect residents with everything they need. Every home is within 200m of a park, with every park and neighborhood able to be accessed via various walkable routes. With work and education facilities on the doorstep and easy access to bus and train routes, opportunities abound to shop, work and study close to home. From easy access to sporting facilities, quality schools, shops and convenient transport to the inclusion of unique landscaping packages, Bonnie brook has been designed for a modern, fulfilling lifestyle. The ultimate vision for Bonnie brook is a community teeming with an enviable array of modern sporting and recreation facilities, an asset for both the local community and the surrounding district. Open active space abounds, with native woodlands and wetlands, parklands, adventure playgrounds and pocket parks all situated close to home. At Bonnie brook, opportunities abound. Ample educational and training facilities, both private and public, plant the seeds for success, for the youngest and oldest community members - all within close proximity to great transport options. This 452 Sqm land is located in the prestigious Bonnie brook. This estate has so much to offer including: • Schools • Childcare Centre • Playgrounds & parks for the family to enjoy • Sports precinct • Close to Rockbank train station • Close to freeways and Taylors Road • Close to Town centre, pharmacy, medical centre, restaurants and much more.... Incredible Blocks are hard to find please call Babli on 0452 235 683 Or Harpreet Mangat on 0416 412 414 as this one won't last long. **DISCLAIMER:** All stated dimensions are approximate only. Particulars given are for general information only and do not constitute any representation on the part of the vendor or agent. Please see the below link for an up-to-date copy of the Due Diligence Check List: www.consumer.vic.gov.au/duediligencechecklist