

16 Pandanus Dr, Horseshoe Bay, Qld 4819



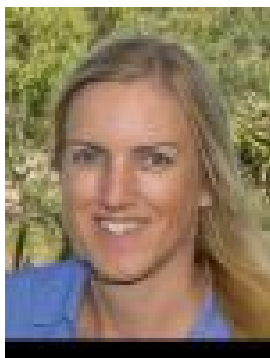
Sold Residential Land

Saturday, 16 December 2023

16 Pandanus Dr, Horseshoe Bay, Qld 4819

Area: 750 m2

Type: Residential Land



Alex Strens

\$201,000

This 750m² lot enjoys the best of both worlds - just a short walk to the beach, yet also backing onto bushland of 'high environmental importance', tucked away allowing you to design your home for the utmost in privacy. Mains sewer, town water and underground power are all available, making building a breeze. A boardwalk walkway through the Horseshoe Bay conservation park lagoon brings you on a scenic walk to the beach surrounded by an array of birdlife. There's a great selection of cafes and restaurants along the beachfront, as well as regular markets, watersports and of course a year-round sandy swimming beach. Just ten minutes' drive to the ferry terminal, supermarkets and facilities of Nelly Bay, you can build your private sanctuary away from it all yet so convenient. Council rates approx \$2500 p.a. This information has been provided to us by third parties and we do not accept any responsibility for its accuracy. You should make your own enquiries and check the information so as to determine whether or not this information is in fact accurate. You must make your own assessment and obtain professional advice if necessary. Property Code: 1434