

16 Peters Street, Whyalla Playford, SA 5600



Sold House

Monday, 9 October 2023

16 Peters Street, Whyalla Playford, SA 5600

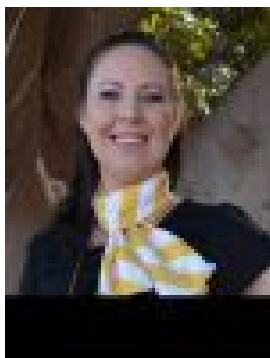
Bedrooms: 2

Bathrooms: 1

Parkings: 2

Area: 244 m2

Type: House



Leah Kirk

\$320,000

A sensational starter, wise investment or the perfect downsizer - This 2013 home offers a fusion of modern style, comfort and easy care living with a thoughtful layout boasting 2 bedrooms, 1 bathroom and open plan living. For the investor this home is currently tenanted on a fixed term lease until 13th February 2024 at \$330.00 per week. Wonderfully positioned on an allotment size of approximately 244m², you are welcomed with a rendered frontage and a tiled porch which overlooks the neat appeal gardens. For extra added security the home includes exterior window roller shutters to the front plus a single garage with a roller door. Upon entry you are greeted with a bright-filled open plan living, kitchen and dining area showcasing sleek tiled flooring, a split system air conditioner for your comfort, blinds and a glass sliding door with views of the rear yard. The well equipped kitchen features stand-out white cabinetry offering plenty of storage and bench space, a double sink, an induction cooktop, oven and rangehood plus a dishwasher to make cleaning up a breeze. Flowing off the open plan leads you to a hallway which places 2 good size bedrooms both completed with carpeted flooring and blinds fitted to the windows plus a built-in robe to bedroom 2. Bedroom 1 includes a split system air conditioner and your own walk-in robe plus access to the 2 way bathroom. The well designed bathroom has been set in a functional design featuring a walk-in shower, vanity and a toilet. This home also includes an additional separate toilet with a vanity flowing off the laundry. Following back through the home to the open plan glass sliding doors opens up to an inviting rear yard complete with a nice size pergola finished with concrete flooring and overlooks the easy care gardens - A great area of the home to sit down and relax or entertain family and friends. Set and forget for a lifestyle of convenience with this modern home offering many desirables which is set in a vibrant community of Whyalla Playford within close proximity to schools, shops and transport. Don't miss out on this great opportunity and contact Leah Kirk today. Council Rates: Approximately \$1,809.78 per annum Rental Appraisal: Available Upon Request Disclaimer: We have obtained all information in this document from sources we believe to be reliable; However we cannot guarantee its accuracy and no warranty or representative is given or made as to the correctness of information supplied and neither the owners nor their agent can accept responsibility for error or omissions. Prospective purchasers are advised to carry out their own investigations. All inclusions and exclusions must be confirmed in the Contract of Sale.