

**16 Portland Street, Morayfield, Qld 4506**

**Sold Residential Land**

Wednesday, 6 March 2024



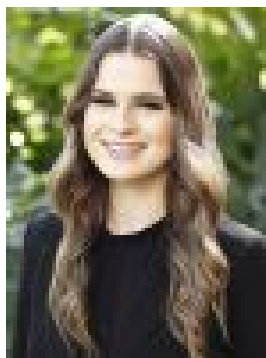
16 Portland Street, Morayfield, Qld 4506

Area: 1012 m2

Type: Residential Land



Ryan Suhle  
0427706699



Brooke Eldridge  
0468599547

**\$440,000**

Located on a peaceful cul-de-sac of Portland Street in Morayfield, this exceptional 1,012m<sup>2</sup> block of land offers a prime real estate opportunity. With a south-east-facing aspect, generous 20.12m frontage, and 50.3m depth, this land provides ample space for endless design possibilities. Morayfield is a vibrant and rapidly growing community offering a blend of convenience and lifestyle. Enjoy easy access to local amenities, schools, parks, shopping centers, and transport options, all within close proximity. Local Schools: Carmichael College Morayfield State High School Morayfield State School Minimbah State School Short Drive to: Morayfield Train Station Major Shopping Centre Centenary Lakes Parks and Playgrounds Distances: Brisbane CBD approx 55 min drive Brisbane Airport approx 35 mins Sunshine Coast approx 50 min drive Disclaimer: Whilst every effort has been made to ensure the accuracy of these particulars, no warranty is given by the vendor or the agent as to their accuracy. Interested parties should not rely on these particulars as representations of fact but must instead satisfy themselves by inspection or otherwise. Due to relevant legislations, a price guide isn't available for properties being sold without a price or via auction. Websites may filter a property being sold without a price or via auction into a price range for functionality purposes. Any estimates are not provided by the agent and should not be taken as a price guide.