

16 Ruby Road, Gymea, NSW 2227

FOX & WOOD

Sold House

Friday, 29 September 2023

16 Ruby Road, Gymea, NSW 2227

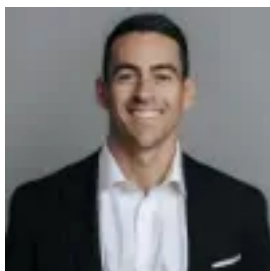
Bedrooms: 4

Bathrooms: 3

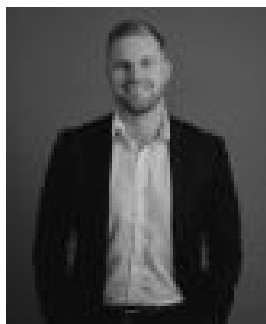
Parkings: 2

Area: 556 m2

Type: House



Danny Fox
0408718118



Shane Flanagan
0460889616

\$1,885,000

Nestled in a popular and vibrant, family-friendly location, this stunning four bedroom, three bathroom home seamlessly blends contemporary design with high functionality. Spacious, light-filled and laid back, this newly updated residence offers flexibility with multiple living spaces an open floorplan and indoor/outdoor flow. The yard includes a self-contained studio as well as all the important features for relaxation and entertaining - a level grassed yard, sunny back deck and covered entertaining area complete with built-in barbecue. A stunning family home with undeniable flow, space and livability. Why you'll love it -

- Beautifully renovated single level brick home on a level 556sqm block.
- Quiet cul-de-sac location.
- Air-conditioned open plan living and dining room. Bi-fold doors effortlessly connect the living room with the rear entertaining deck.
- Stunning kitchen, stone bench tops, stainless steel appliances including dishwasher, pendant lighting and breakfast bench.
- 4 generous bedrooms. Main with air conditioning, large walk-in wardrobe and stylish ensuite with bath tub and rain water shower head. 2 bedrooms with built-in wardrobes and all with ceiling fans.
- Modernized family bathroom with bath tub.
- Internal laundry with loads of storage and modern finishes.
- LED downlights throughout the home and hybrid flooring flows through the living areas.
- Versatile studio complete with bathroom & kitchenette provides endless possibilities.
- The backyard is an entertainers dream and features a level grassed yard, sunny back deck and covered entertaining area complete with built in barbecue and travertine floor tiles.
- Lock up garage with remote entry and access into the studio. Gated off street parking for additional vehicles.
- Popular, family friendly location with Gymea North Public School just down the road and a range of shopping centers, cafes, sporting facilities, parks and Kareela Golf Club close by.
- Quarterly rates - Council \$515, Water \$159.
- Land size - 556sqm.