

16 Ruth Street, Merrylands, NSW 2160



Sold House

Wednesday, 4 October 2023

16 Ruth Street, Merrylands, NSW 2160

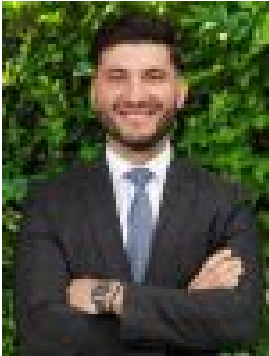
Bedrooms: 3

Bathrooms: 1

Parkings: 2

Area: 757 m2

Type: House



Joshua Demetriou
0296314433



Jaiden Spencer
0432337277

\$1,215,000

Presenting this impressive 757sqm super block nestled away in an extremely desirable location. Offered to the market for the first time in nearly 70 years, this parcel of land is 15.24m (approx) wide which unlocks potential for a possible multi dwelling development opportunity (STCA).The home is East/West facing drenched with natural light which offers a renovated bathroom and ticks many boxes for the young growing family or a long-term ideal investment. Situated within many handy amenities including local schools, shops, transport and many more. Features Include:Three good sized bedroomsStudy/East facing sunroomLiving space with air-conGas kitchen with eat in dining areaRenovated bathroom with floor to ceiling tilesTimbered outdoor entertaining area with rampDouble car garage/workshop at rearHandy Amenities:St Margaret Mary's Primary SchoolMerrylands Public SchoolMerrylands HighschoolCerdon CollegeAdvanced Early LearningMerrylands Park & swimming centreSupa IGA Merrylands WestStockland MerrylandsThe CoolibahT-Way bus serviceMerrylands Train StationWestmead HospitalONLINE enquiry policy - All email & online enquiries received from this website will not be attended to if a number & email address are not provided. All information contained herein is gathered from sources we deem to be reliable. However, we cannot guarantee its accuracy and interested persons should rely on their own enquiries.Disclaimer: The information presented has been furnished from sources we deem to be reliable. We have not verified whether or not the information is accurate and do not accept any responsibility to any person and do no more than pass it on. All interested parties should rely on their own enquiries in order to determine the accuracy of this information.