

16 Shanke Crescent, Kings Langley, NSW 2147

MANOR

Sold House

Friday, 5 April 2024

16 Shanke Crescent, Kings Langley, NSW 2147

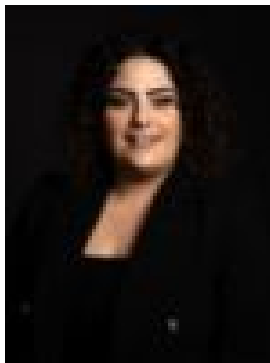
Bedrooms: 4

Bathrooms: 2

Parkings: 2

Area: 697 m²

Type: House



Daniella Lazzaro
0405441754

\$1,630,000

Spaciously designed throughout, this single level family entertainer is ideal for those wanting a low maintenance lifestyle within close proximity to all life's amenities. This home is perfectly suited for growing families and backing the leafy Lady Penhryn Park in a highly convenient location. Positions you within Kings Langley Public School catchment, close proximity to Kings Langley Shops, City buses and so much more. The home features: Sun-drenched and open plan living and dining area plus extensive family room Renovated u-shaped kitchen with stone benches, dishwasher and loads to storage 4 spacious bedrooms with robes and walk-in to main bedroom 2 newly renovated bathrooms Internal laundry with external access Solar electricity, air conditioning, plentiful amount of linen storage Inviting outdoor area featuring a sparkling in-ground pool Double garage with drive thru access and attic storage Land Size - 697.2m² (approx.) Potential Rent - \$850 per/week Disclaimer: The above information has been gathered from sources that we believe are reliable. However, we cannot guarantee the accuracy of this information and nor do we accept responsibility for its accuracy. Any interested parties should rely on their own enquiries and judgment to determine the accuracy of this information for their own purposes. Images are for illustrative and design purposes only and do not represent the final product or finishes.