

16 Shelton Street, Avenel, Vic 3664

Elders Real Estate

House For Sale

Friday, 29 December 2023

16 Shelton Street, Avenel, Vic 3664

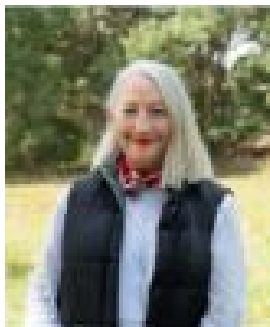
Bedrooms: 5

Bathrooms: 2

Parkings: 4

Area: 1420 m2

Type: House



Christine Ford

0419561386

\$700,000 to \$750,000

In the heart of sought-after Shelton Street, Avenel, sits a charming 5-bedroom weatherboard family home, cherished by one family for 24 years, ready to embrace new owners. This abode boasts timeless elegance with sanded timber floors, offering ample living space for a family of six. The central attraction is the rustic yet sophisticated timber kitchen equipped with a chef's electric oven, gas cooktop, dishwasher, and walk-in pantry. A cozy open plan dining and sitting room, complemented by a wood fire, fosters cherished family moments. A spacious family TV room and a secluded study nook ensure relaxation and productivity. The master bedroom features a built-in wardrobe and ensuite, serving as a private sanctuary. Comfort is assured year-round with a fan-forced wood heater, reverse cycle split systems, evaporative cooling and ceiling fans throughout. The backyard invites with an undercover entertaining deck, a fenced spa bath, BBQ area, Basketball Pro half court, and a large trampoline, perfect for memorable outdoor activities. An outside bungalow serves as a guest room or an independent retreat. The property spans 1420sqm, offering ample privacy, a 15m x 7m double roller door garage including 32 solar panels feeding back into the grid, carport, lock-up workshop, and a cool room, catering to various needs. Also on offering, is the adjoining block of land (1447 sqm) at 12 Pinniger Street should you wish to extend your garden or build another home. Conveniently located near Avenel Train Station, Bank Street, Jubilee Park, schools, and recreational spaces, No. 16 Shelton Street strikes a unique balance between tranquility and accessibility.