

16 Strathire Gardens, Hamlyn Heights, Vic 3215



Sold House

Thursday, 11 April 2024

16 Strathire Gardens, Hamlyn Heights, Vic 3215

Bedrooms: 3

Bathrooms: 2

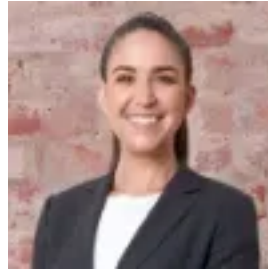
Parkings: 2

Area: 699 m2

Type: House



Carl Hammond
0407042152



Sally McKay
0432765831

\$742,500

Don't miss this opportunity to secure a treasured family home offered to the market for the first time in its 50 year history, nestled at the end of a quiet cul-de-sac in the increasingly sought-after suburb of Hamlyn Heights. It is ideally suited to a young family looking to be close to schools and shops, with superior access to the Ring Road, while plenty of scope exists to update or extend (STCA). A cosy formal lounge off the entry creates an inviting area to relax and unwind by the gas-log fire on those chilly winter nights. The comfortable open-plan kitchen/dining zone adjoins the step-down living room, which features an impressive skylight, flooding the space with an abundance of natural light. Sliding doors lead outdoors to a paved alfresco area, where you can enjoy the sunshine amongst the well-established gardens that are filled with an array of colourful plants. Close proximity to Haines Reserve, playground and scenic bike tracks is convenient for weekend adventures. A short walk to Vines Road shops for your daily shopping needs or morning coffee. Stroll to Hamlyn Banks Primary School and within walking distance to Western Heights Secondary College (both zoned). Nearby to Kardinia International College. Less than 15 minutes into the CBD and Geelong Waterfront. Easy Ring Road access keeps you easily connected to Melbourne and the Surfcoast. - Occupies approx. 699m² in a quiet cul-de-sac - Kitchen with St George oven, electric cooktop, built-in pantry - Three bedrooms all contain built-in robes and ceiling fans - Bathroom with sunken bathtub - Separate shower room and second w/c - Spacious laundry has external access to the yard - Split-system air conditioner, gas heaters, electric heater - Garden boasts colourful plants, vegetable patch, fruit trees - Double carport for off-street parking, three garden sheds