

16 Strutt Crescent, Metford, NSW 2323



House For Sale

Thursday, 16 May 2024

16 Strutt Crescent, Metford, NSW 2323

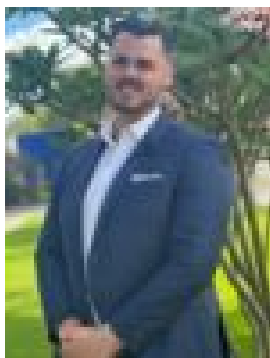
Bedrooms: 4

Bathrooms: 2

Parkings: 2

Area: 498 m2

Type: House



Nathan Stenner

0431110243

Preview

Nestled in the heart of Metford, 16 Strutt Crescent is more than just a house-it's a haven where comfort meets convenience. This beautifully crafted residence offers a blend of modern elegance and timeless charm, perfect for those seeking a place to call home. Experience spacious living with four well-appointed bedrooms, including a master suite featuring a walk-in wardrobe and ensuite bathroom for ultimate privacy and comfort. This home gives you the opportunity to embrace flexible living with multiple living areas, perfect for relaxing, entertaining, or enjoying quality time with loved ones. Features:- Master bedroom suite | WIR and ensuite- Four bedrooms- Multiple living areas- Brand new ducted air conditioning- Double garage equipped with a remote-controlled door- Outdoor entertainment area with built in bbq connected to town gas Location:- Walking distance to public and private schools- 800m to Metford Sporting Fields, Skate Park and Recreational reserve- 900m to Metford Railway Station- 3.6km to Stockland Greenhills Shopping Centre- 3.5km to New Maitland Hospital- Less than 30 minutes to Newcastle Don't miss your chance to experience the luxury lifestyle that awaits at 16 Strutt Crescent. Contact us today to arrange a viewing and make this stunning residence your new home!