

# 16 Sublime Road, Baldivis, WA 6171



## House For Sale

Wednesday, 8 May 2024

16 Sublime Road, Baldivis, WA 6171

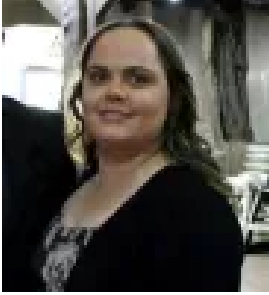
**Bedrooms: 3**

**Bathrooms: 2**

**Parkings: 2**

**Area: 375 m2**

**Type: House**



RoseMarie Houghton

0457700660

**From \$749,000**

This home, built in 2019 by Blueprint Homes, is nestled in the prestigious Brightwood Estate, a vibrant private community located an easy 40 minutes' drive south of the Perth CBD in the heart of Baldivis and opposite a stunning 2.2-million-dollar adventure park. It is on a 375 square metre block (12.5-30). Featuring three bedrooms, two bathrooms, and a theatre room, this property boasts the potential of a four-bedroom layout on paper. Complete with a comprehensive security alarm system and cameras throughout, it also offers two ovens, scullery, an extended outdoor area with a pulldown blind, and provisions for a spa or pool in the backyard, along with space for an outdoor heater. With amenities such as a daycare, IGA, medical centre, high school, and primary school nearby, the location is ideal for a small or new young family. Everything you need is at your fingertips with a choice of reputable schools, parklands and more than 80 specialty retail stores at Stockland Baldivis Shopping Centre. The beautiful beaches of Warnbro Sound are just ten minutes away whilst the city centres of Rockingham and Mandurah provide endless restaurants, cafes, bars and entertainment. To arrange a private viewing, please contact Rose on 0488360635 or email [rose@perthpropertysolutions.com.au](mailto:rose@perthpropertysolutions.com.au)