

16 Vicksburg Avenue, Wyndham Vale, Vic 3024



House For Rent

Friday, 26 April 2024

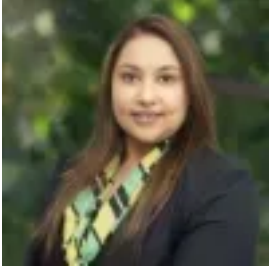
16 Vicksburg Avenue, Wyndham Vale, Vic 3024

Bedrooms: 4

Bathrooms: 2

Parkings: 2

Type: House



Bansari Raval
0404171306

\$510 pw

Reliance Real Estate proudly presents a serene retreat where comfort and style converge effortlessly at 16 Vicksburg Avenue, Wyndham Vale. This charming residence offers a perfect balance of modern convenience and thoughtful design, creating a truly inviting atmosphere for you to call home. Property Features: • The home features four (4) generously sized bedrooms; • Two bathrooms; • With two car spaces, parking is a breeze, adding convenience to your daily routine; • A separate living or study area, providing flexibility to suit your lifestyle needs; and, • For added comfort year-round, this home features ducted heating and cooling, ensuring the perfect temperature no matter the season. Situated in the sought-after Wyndham Vale area, this home offers proximity to local amenities, schools, parks, and transportation options, providing both convenience and lifestyle.

Schools: • Wyndham Vale Primary School: A highly rated primary school located at 85 Ribblesdale Avenue, Wyndham Vale, VIC 3024. It has approximately 1316 students with a student-to-teacher ratio of 1 to 14 • Ngarri Primary School: Another government primary school in the area with approximately 340 students • Manor Lakes P-12 College: A government school with a student population of around 3050 • Iramoo Primary School: A government primary school with approximately 570 students • Riverbend Primary School: A government primary school with around 520 students

Parks and Nature Attractions: • Presidents Park: A lovely park with 9 playgrounds, perfect for families and dog owners. It offers walking trails and a large field for outdoor activities • Lollipop Hill Playground: Located within Manor Lakes, this playground is great for kids. Explore the Lollipop Hill estate and enjoy the amenities • Jubilee Park: Situated near the Jubilee estate, this area is clean, new, and mainly owner-occupied. It offers green spaces and recreational facilities • Greens Road Adventure Playground: Another park to explore in the vicinity

Transportation Options: • Train: You can take the train from Wyndham Vale to Southern Cross Station in Melbourne. The journey takes approximately 54 minutes via Werribee • Bus: Buses connect Wyndham Vale to Melbourne. You can take a bus from Wyndham Vale to Southern Cross Coach Terminal/Spencer St • Taxi/Car: A taxi ride from Wyndham Vale to Melbourne covers a distance of about 36.1 km and takes around 30 minutes

Your new chapter begins here. Feel free to contact and we would love to set you up for a chance to view this property. **DISCLAIMER:** All stated dimensions are approximate only. Particulars given are for general information only and do not constitute any representation on the part of the vendor or agent.