

16 Vista Court, Broadford, Vic 3658

Residential Land For Sale

Monday, 6 November 2023

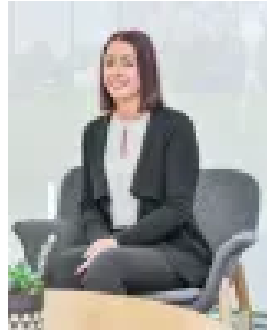
16 Vista Court, Broadford, Vic 3658

Area: 786 m2

Type: Residential Land



Kieran Knight
0357831268



Jade Tomass
0357831268

\$269,000

In a world where available land is becoming increasingly scarce, securing approximately 786m² square metres of vacant land in the sought-after Mountview Estate is a rare and exciting opportunity. This allotment offers more than just room to build; it provides panoramic views of Mount Piper and stunning evening sunsets that fill the sky with color. Everything you need for a comfortable lifestyle is within easy reach - Broadford Primary School and Secondary College, Broadford Station, beautiful parks, Broadford Golf Club, and easy access to the Hume Freeway. Adding to the allure of this land is its state of readiness for construction. Unlike other parcels that necessitate extensive clearing and the removal of existing structures, this one is free from those complications. It serves as a blank canvas, primed to host your dream home (STCA). When such an outstanding opportunity presents itself, hesitating isn't an option. This is the ideal locale to plant your roots and construct the life you've always envisioned.