

**16 Woolwich Way, Taylors Hill, Vic 3037**



**House For Sale**

Monday, 19 February 2024

16 Woolwich Way, Taylors Hill, Vic 3037

**Bedrooms: 4**

**Bathrooms: 2**

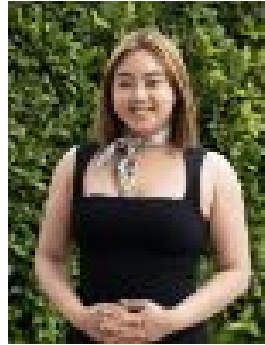
**Parkings: 2**

**Area: 630 m2**

**Type: House**



George Skizas  
0393909002



Teresa Nguyen  
0393909002

**\$950,000 - \$1,020,000**

On-Site Auction, Sunday the 17th of March at 11am AUCTION BIDDING BY REGISTRATION ONLY. Please contact George Skizas on 0401 203 869 to register your interest! Introducing 16 Woolwich Way, Taylors Hill-a captivating modern family abode situated in a serene and conveniently located neighborhood. This residence embodies contemporary elegance and functional design, offering a sanctuary of comfort for discerning homeowners. Step inside to discover four generously proportioned bedrooms, each adorned with built-in robes, ensuring ample storage space for the entire family. The luxurious master suite exudes sophistication, featuring a walk-in robe and a light-filled double vanity ensuite complete with a luxurious bathtub. Large sliding doors seamlessly connect the master bedroom to the undercover alfresco, creating a seamless transition between indoor and outdoor living spaces. This home offers a versatile layout, with various living options to suit every lifestyle. The heart of the home is centered around a formal lounge room, providing an elegant space for relaxation and entertainment. Flowing effortlessly from the lounge is the open-plan chef's kitchen, boasting 40mm Caesar Stone bench-tops with waterfall finish and high-quality stainless steel appliances. The kitchen overlooks the spacious meals and family area, fostering a sense of connectivity and warmth. An additional living space adjacent to the kids' bedrooms serves as an ideal retreat for younger members of the family, offering a dedicated area for play and relaxation. Large bi-fold doors lead to the undercover entertainment area, extending the living space and creating an inviting environment for gatherings and socialising. The expansive backyard provides ample room for children to play and explore, ensuring endless hours of enjoyment for the whole family. Additional features include; Home office space, heating, cooling, alarm system, high ceilings, plantation shutters, security cameras, solar panels and a double remote control garage with internal access. Positioned in close proximity to Parkland, Taylors Hill Shopping Centre, Caroline Springs Shopping Centre, Southern Cross Grammar, St George Preca / Springside Primary School and much more.